

A Village of 100 Insolvent Debtors New Zealand – 2018/2019

OUR VILLAGE

Of the 100 people in our village...

12 people have entered into a
Summary Instalment Order

42 people have
entered into a
No Asset Procedure

GENDER

51 are male
49 are female

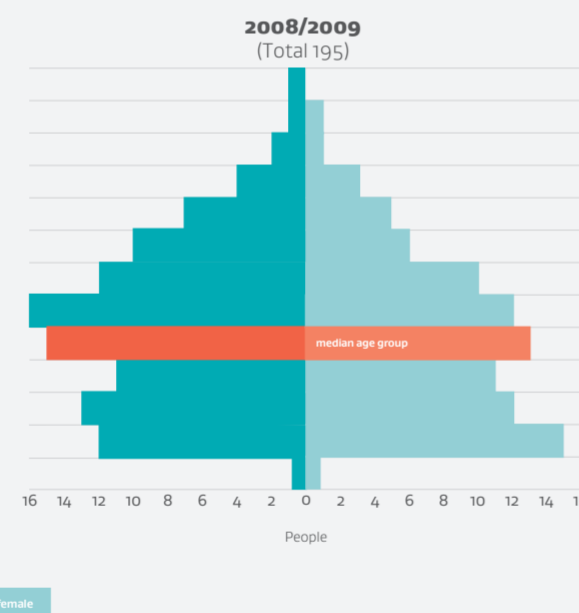
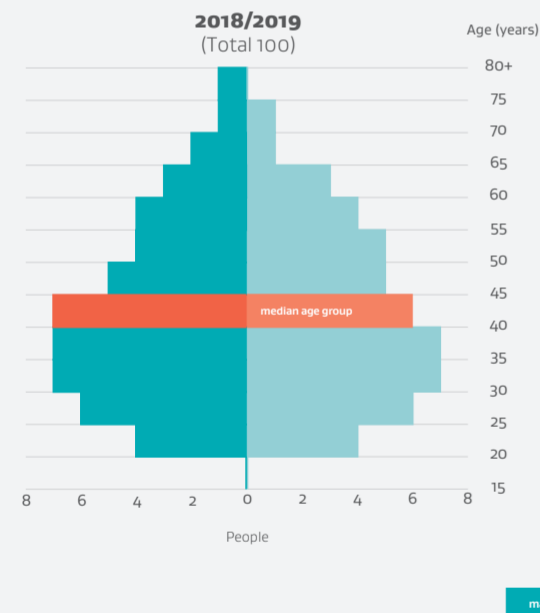
46 people are bankrupt

31 are debtor applications
15 are creditor applications

*7 of the bankrupt debtors in our village have
been bankrupt or in a No Asset Procedure before

AGE

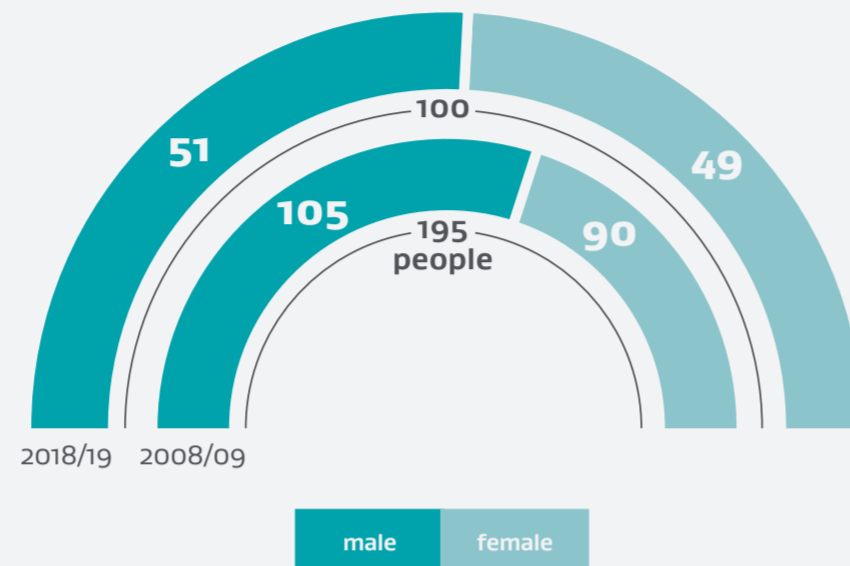
Our village's ages and
median age-groups



POPULATION

Our village's population
has fluctuated over the
last 20 years.

The population of our
village is **100** people.
The last time our
population was this low,
was in 2003/04, **prior**
to the Global Financial
Crisis.



CULTURAL DIVERSITY

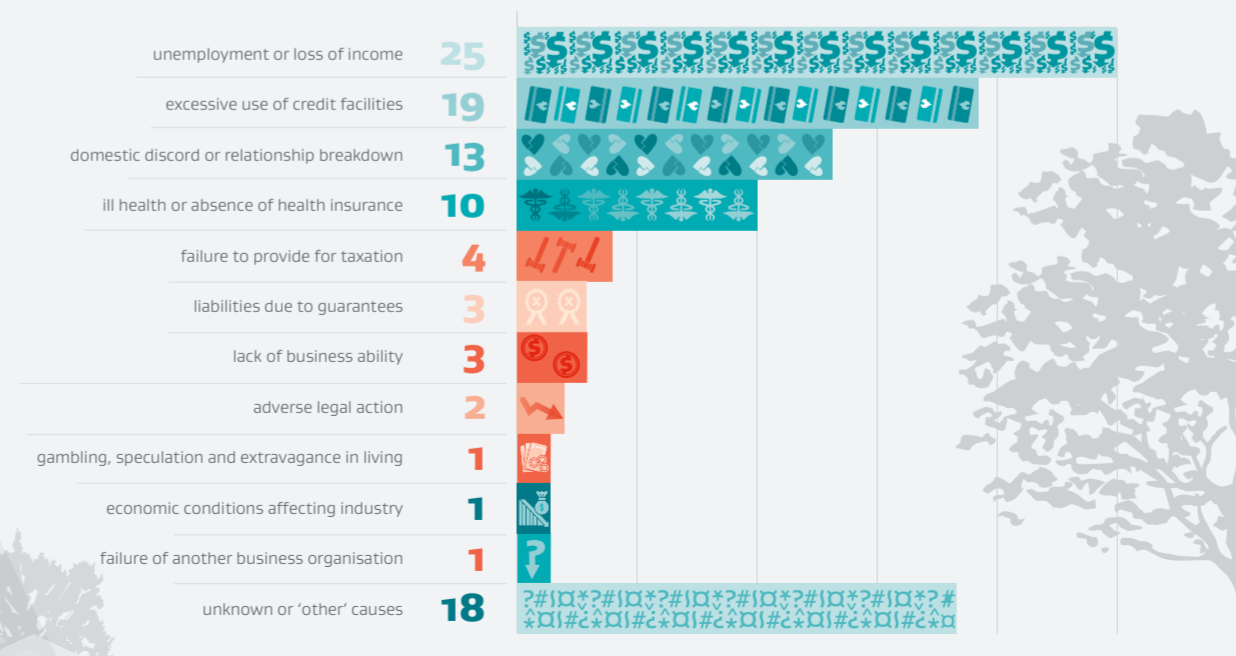
Of the 100 people
in our village who
stated one or more
ethnicity...

68
people identify as
New Zealand
European

22
people identify as Maori
9
people identify as Pacific Peoples
5
people identify as 'other European'
5
people identify as Asian
4
people identify as Australian
2
people in our village selected 'other' ethnicity

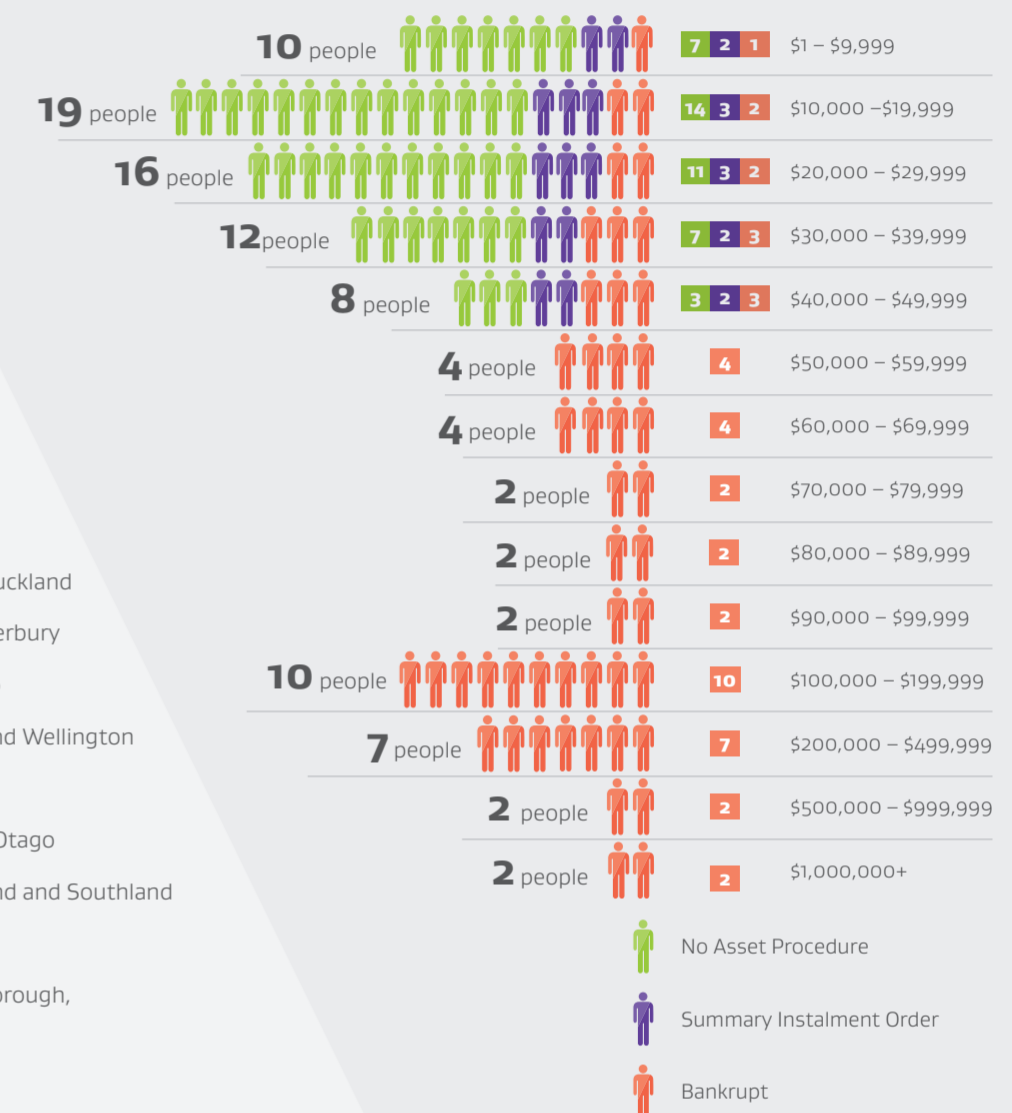
CAUSE OF INSOLVENCY

Within our village, insolvency is attributed to the following causes...

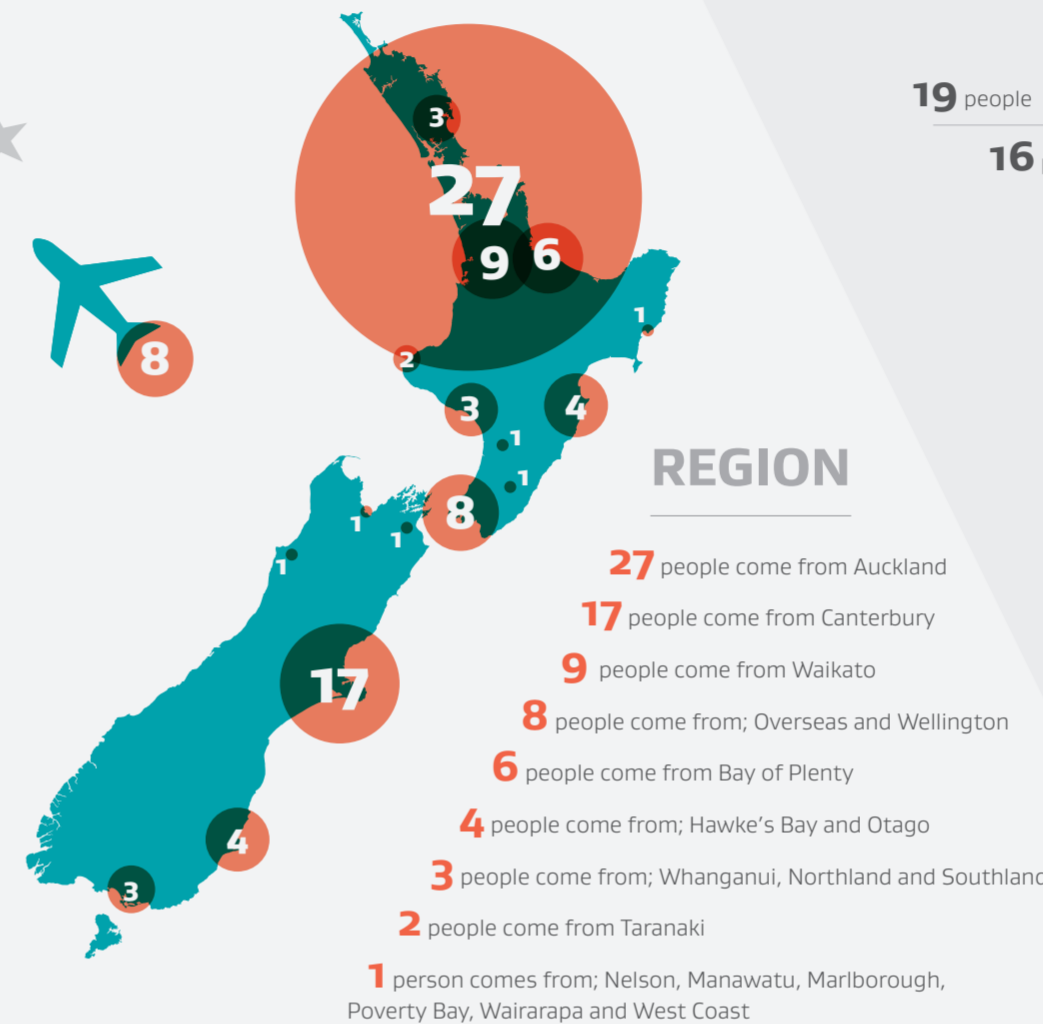


2,890 people entered into personal insolvency procedures in New Zealand during 2018/19. In our village of **100**, each person represents **29** people.

DEBT LEVEL



REGION



EMPLOYMENT

In our village everybody is
aged 15 years or over...



Note: This infographic was developed to illustrate the key demographics of people who entered into personal insolvency procedures during 2018/19 using the concept of New Zealand as a village of 100 insolvent debtors. This data has been obtained through various sources, predominantly the Statement of Affairs form which debtors are required to complete upon entering into an insolvency procedure. Other sources of information include public registers and information provided by creditors and other third parties. For further comparative data on previous financial years please refer to the Insolvency and Trustee Service website www.insolvency.govt.nz