



## Insolvency Statistics

For the year 1 July 2006 - 30 June 2007

### Contents:

For Bankruptcies and ITS Administered Liquidations:

1. High Court Orders
2. Petition Types (Monthly)
3. Petition Types (Annual)
4. Cumulative Totals
5. Monthly Totals
6. Annual Totals

For Bankruptcies Only:

7. Gender Split
8. Age Groups
9. Previously Bankrupt
10. Employment Status at Date of Adjudication
11. Occupation at Date of Adjudication
12. Reason for Bankruptcy
13. Funds Recovered Per Financial Year
14. Estate Debt Levels
15. International Bankruptcy Rates

### **Notes on Bankruptcy numbers**

In the 2006/07 financial year, the ITS received 3,593 bankruptcy estates. This is the highest number of files received for the last 14 years. These bankruptcies consisted of 2,176 males, 1,403 females and 14 partnership estates.

In the 2005/06 financial year, the ITS received 3,087 bankruptcy estates. These bankruptcies consisted of 1,821 males, 1,252 females and 14 partnership estates.

In the 2004/05 financial year, the ITS received 2,995 bankruptcy estates. These bankruptcies consisted of 1,731 males, 1,251 females and 13 partnership estates.

For the purpose of the demographic statistics we have excluded the partnership figures, giving 'natural person' bankrupt totals of 3,579 in 2006/07 (3,593 less 14), 3,073 in 2005/06 (3,087 less 14) and 2,982 in 2004/05 (2,995 less 13).

### **Notes on Company Liquidation Numbers**

While the ITS administers some court appointed liquidations, unlike bankruptcy where the ITS is the sole administrator for New Zealand, the ITS does not administer all the company liquidations in New Zealand. The majority of liquidations are administered by private liquidators and as such, the ITS cannot provide statistics on the liquidations it does not administer.

### **Comparative Analysis**

Although this is the statistical report for the 2006/07 financial year, much of the data from the 2005/06 financial year (or further back where available) has been included in this report to allow direct comparisons to previous year's figures.

### **Context**

While all care is taken to ensure the accuracy of our statistical information and data analysis, the Insolvency and Trustee Service cannot be held responsible for inaccuracies in any data provided to or by us, or how these statistics are used by any party.

### **Vera Ferreira**

Project Coordinator

Insolvency and Trustee Service

[www.insolvency.govt.nz](http://www.insolvency.govt.nz)

ITS ADMINISTERED INSOLVENCY VOLUMES 2004/05, 2005/06, 2006/07

NZ Bankruptcy Estate Volumes by Court of Adjudication

High Court	2006/07	% of 06/07 total	2005/06	% of 05/06 total	2004/05	% of 04/05 total	% Change between 05/06 & 06/07
Auckland	1,011	28	850	28	842	28	19
Blenheim	36	1	30	1	42	1	20
Christchurch	555	15	495	16	427	14	12
Dunedin	127	4	143	5	117	4	-11
Gisborne	48	1	40	1	53	2	20
Greymouth	20	1	5	0	18	1	300
Hamilton	285	8	241	8	275	9	18
Invercargill	104	3	92	3	83	3	13
Masterton	26	1	33	1	25	1	-21
Napier	148	4	140	5	122	4	6
Nelson	82	2	76	2	53	2	8
New Plymouth	74	2	68	2	83	3	9
Palmerston North	149	4	130	4	150	5	15
Rotorua	165	5	124	4	166	6	33
Tauranga	175	5	142	5	97	3	23
Timaru	79	2	62	2	56	2	27
Wellington	300	8	268	9	233	8	12
Whangarei	132	4	82	3	101	3	61
Wanganui	77	2	66	2	52	2	17
<b>TOTAL</b>	<b>3,593</b>	<b>100</b>	<b>3,087</b>	<b>103</b>	<b>2,995</b>	<b>107</b>	<b>16</b>

ITS Administered Liquidations by High Court Order							
High Court	2006/07	% of 06/07 total	2005/06	% of 05/06 total	2004/05	% of 04/05 total	% Change between 05/06 & 06/07
Auckland	48	32	35	23	53	32	37
Blenheim	3	2	0	0	0	0	n/a
Christchurch	10	7	17	11	19	11	-41
Dunedin	1	1	3	2	0	0	-67
Gisborne	9	6	1	1	3	2	800
Greymouth	0	0	0	0	0	0	n/a
Hamilton	4	3	2	1	8	5	100
Invercargill	4	3	2	1	3	2	100
Masterton	0	0	1	1	0	0	-100
Napier	9	6	12	8	6	4	-25
Nelson	3	2	1	1	1	1	200
New Plymouth	1	1	3	2	0	0	-67
Palmerston North	8	5	1	1	1	1	700
Rotorua	4	3	6	4	8	5	-33
Tauranga	1	1	2	1	6	4	-50
Timaru	1	1	0	0	0	0	n/a
Wellington	12	8	13	9	19	11	-8
Whangarei	13	9	14	9	20	12	-7
Wanganui	2	1	6	4	1	1	-67
n/a*	18	12	15	10	18	11	20
<b>TOTAL</b>	<b>151</b>	<b>100</b>	<b>134</b>	<b>100</b>	<b>166</b>	<b>100</b>	<b>13</b>

**Notes:**

The above figures detail the total number of bankruptcies adjudicated in each NZ High Court per Year. ITS does supply month by month splits for each High Court for these years in PDF format on its website [www.insolvency.govt.nz](http://www.insolvency.govt.nz). Similarly, month to month splits by NZ High Court for ITS administered liquidations are also available on the ITS website.

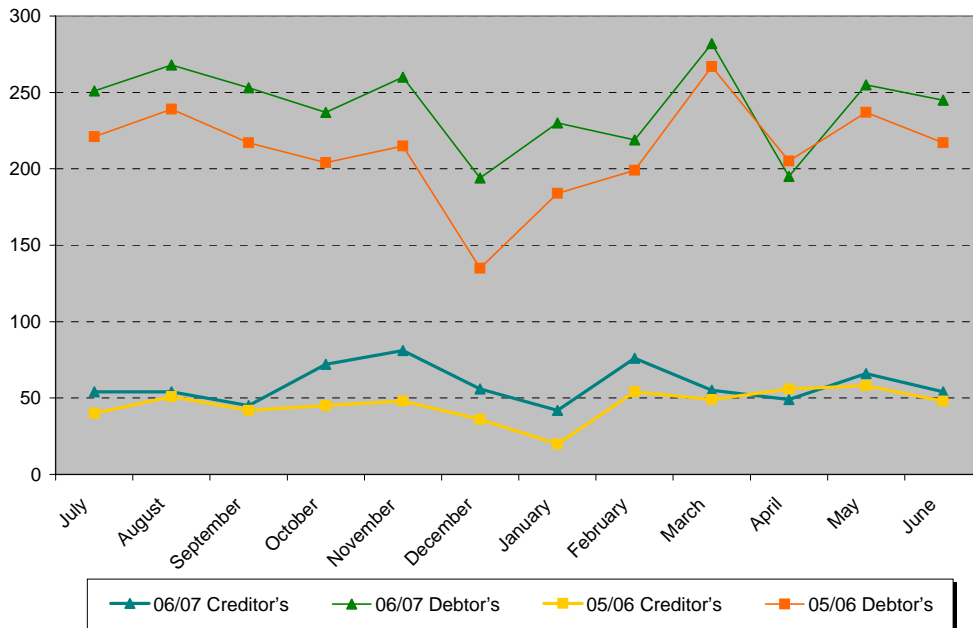
**\*n/a:** These are liquidations that have no court order associated with the liquidation. This is likely to be due to the shareholders (usually the Official Assignee as a result of a bankruptcy in these cases) placing the company into voluntary liquidation and subsequently appointing the Official Assignee (themselves) liquidator.

NZ Bankruptcy Creditor vs Debtor Petitions Volumes 2006/07				
	06/07 Creditor's	06/07 Debtor's	06/07 % Creditor's	06/07 % Debtor's
July	54	251	18	82
August	54	268	17	83
September	45	253	15	85
October	72	237	23	77
November	81	260	24	76
December	56	194	22	78
January	42	230	15	85
February	76	219	26	74
March	55	282	16	84
April	49	195	20	80
May	66	255	21	79
June	54	245	18	82
<b>Sub-Total</b>	<b>704</b>	<b>2,889</b>	<b>20</b>	<b>80</b>
<b>TOTAL</b>	<b>3,593 (YTD)</b>		<b>100%</b>	

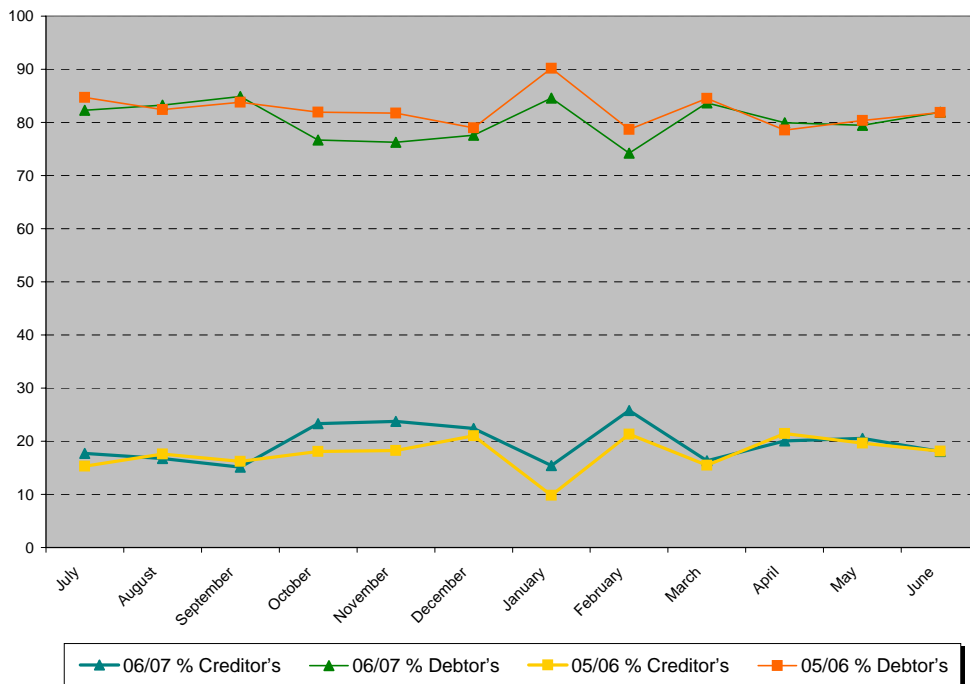
NZ Bankruptcy Creditor vs Debtor Petitions Volumes 2005/06				
	05/06 Creditor's	05/06 Debtor's	05/06 % Creditor's	05/06 % Debtor's
July	40	221	15	85
August	51	239	18	82
September	42	217	16	84
October	45	204	18	82
November	48	215	18	82
December	36	135	21	79
January	20	184	10	90
February	54	199	21	79
March	49	267	16	84
April	56	205	21	79
May	58	237	20	80
June	48	217	18	82
<b>Sub-Total</b>	<b>547</b>	<b>2,540</b>	<b>18</b>	<b>82</b>
<b>TOTAL</b>	<b>3,087</b>		<b>100%</b>	

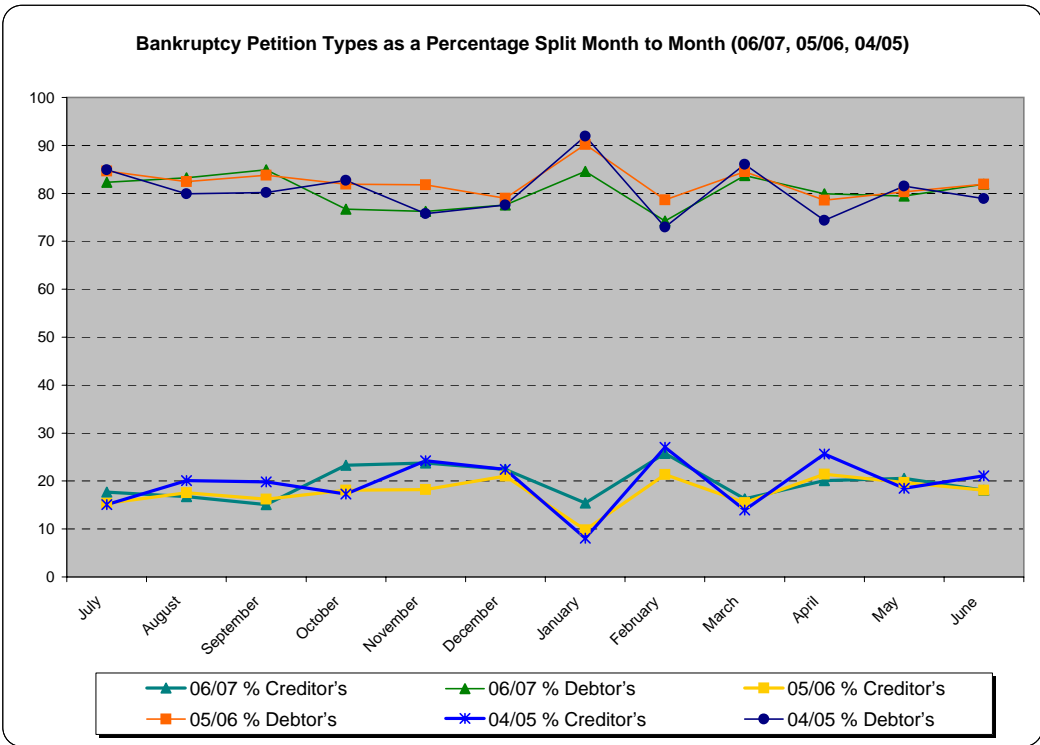
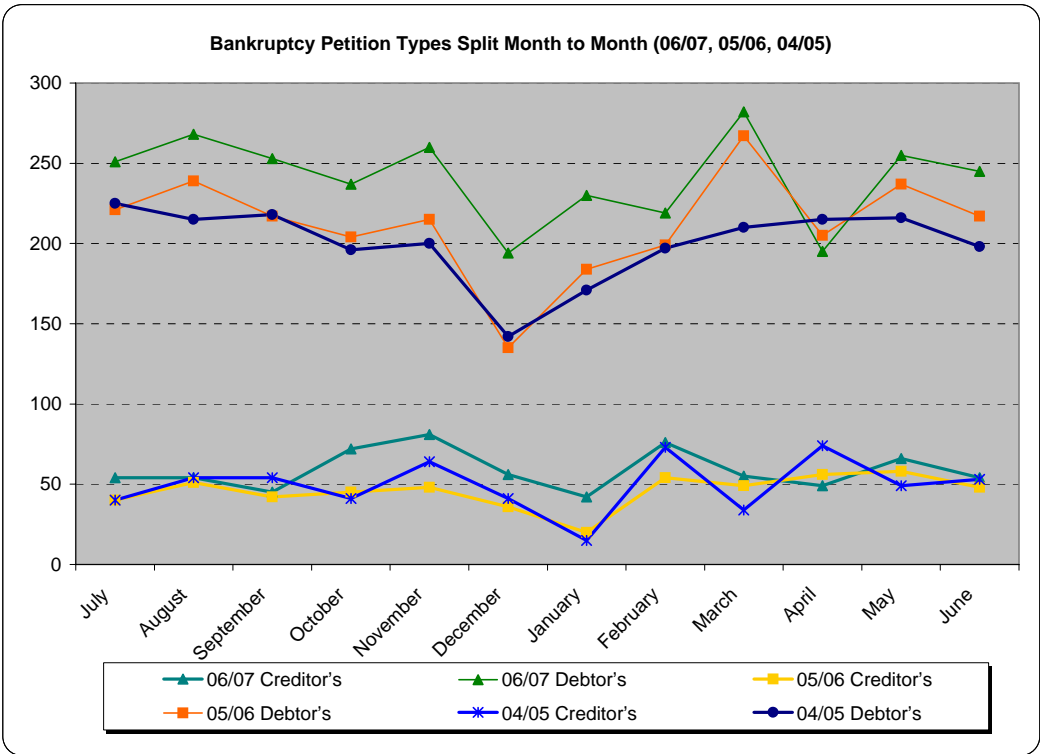
NZ Bankruptcy Creditor vs Debtor Petitions Volumes 2004/05				
	04/05 Creditor's	04/05 Debtor's	04/05 % Creditor's	04/05 % Debtor's
July	40	225	15	85
August	54	215	20	80
September	54	218	20	80
October	41	196	17	83
November	64	200	24	76
December	41	142	22	78
January	15	171	8	92
February	73	197	27	73
March	34	210	14	86
April	74	215	26	74
May	49	216	18	82
June	53	198	21	79
<b>Sub-Total</b>	<b>592</b>	<b>2403</b>	<b>20</b>	<b>80</b>
<b>TOTAL</b>	<b>2,995</b>		<b>100%</b>	

**Bankruptcy Petition Types Split Month to Month (06/07, 05/06)**



**Bankruptcy Petition Types as a Percentage Split Month to Month (06/07, 05/06)**

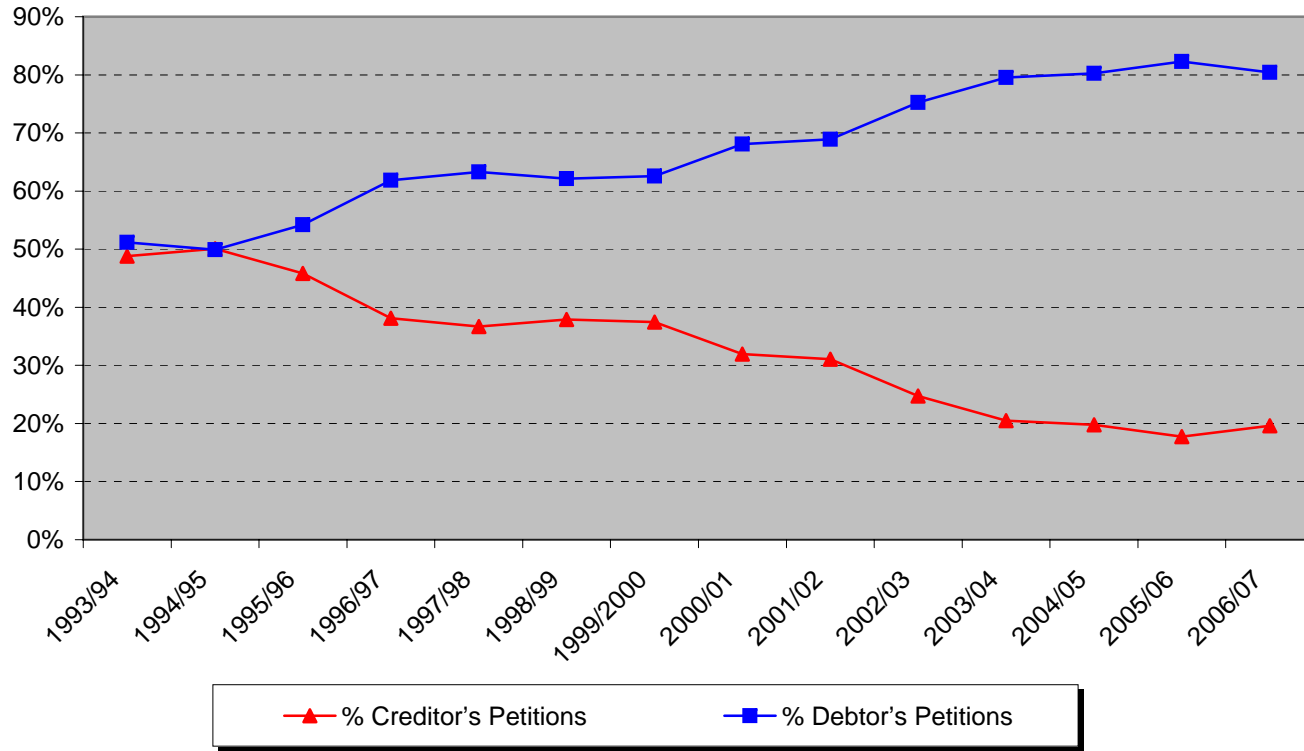




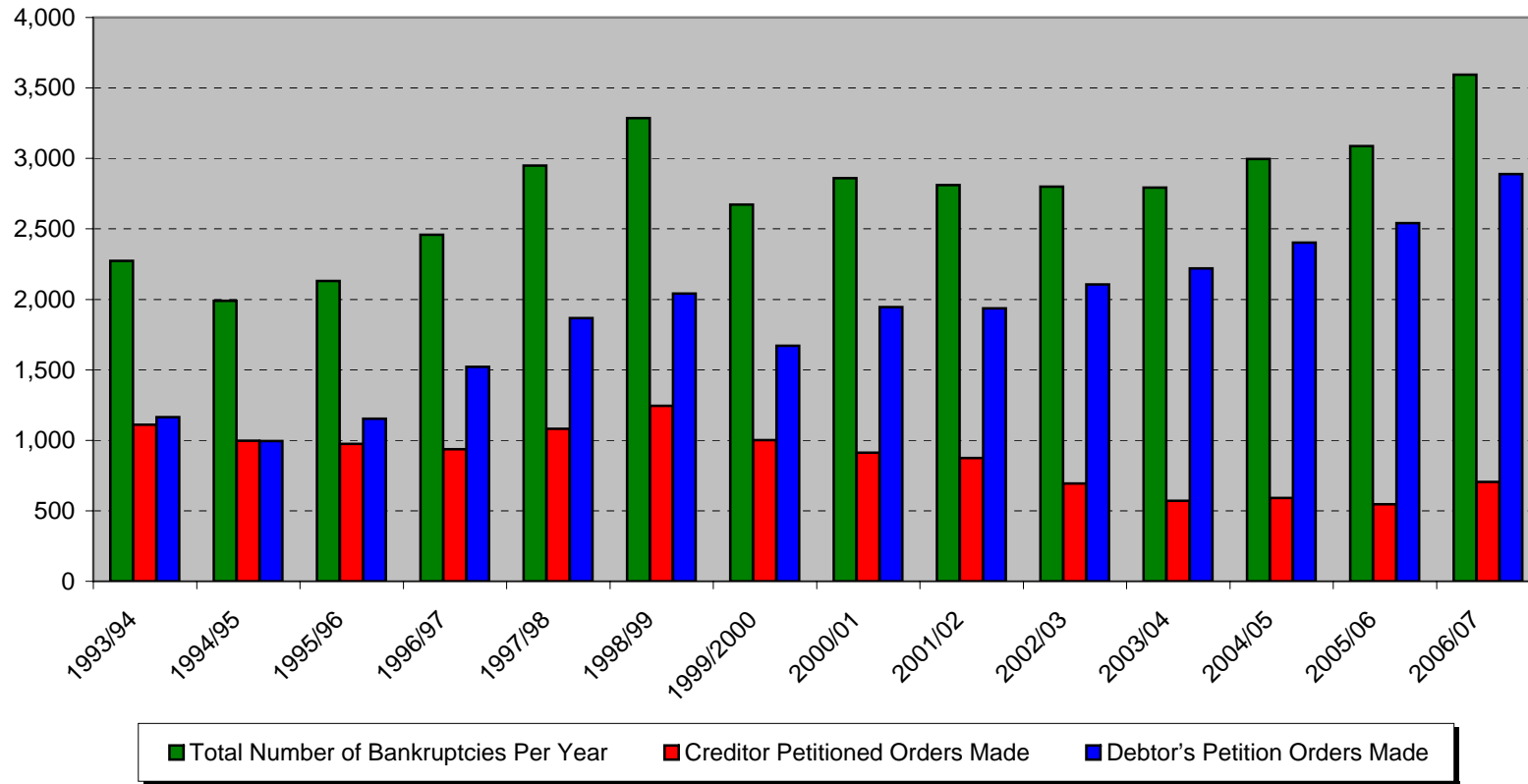
NZ Bankruptcy Creditor vs Debtor Petitions Volumes Per Financial Year					
Financial Year 1 July - 30 June	Total Number of Bankruptcies Per Year	Creditor Petitioned Orders Made	Debtor's Petition Orders Made	% Creditor's Petitions	% Debtor's Petitions
1993/94	2,274	1,110	1,164	49%	51%
1994/95	1,991	997	994	50%	50%
1995/96	2,130	976	1,154	46%	54%
1996/97	2,458	937	1,521	38%	62%
1997/98	2,949	1,082	1,867	37%	63%
1998/99	3,285	1,244	2,041	38%	62%
1999/2000	2,673	1,001	1,672	37%	63%
2000/01	2,859	913	1,946	32%	68%
2001/02	2,811	874	1,937	31%	69%
2002/03	2,800	693	2,107	25%	75%
2003/04	2,792	572	2,220	20%	80%
2004/05	2,995	592	2,403	20%	80%
2005/06	3,087	547	2,540	18%	82%
2006/07	3,593	704	2,890	20%	80%
<b>Total</b>	<b>38,697</b>	<b>12,242</b>	<b>26,456</b>	<b>32%</b>	<b>68%</b>



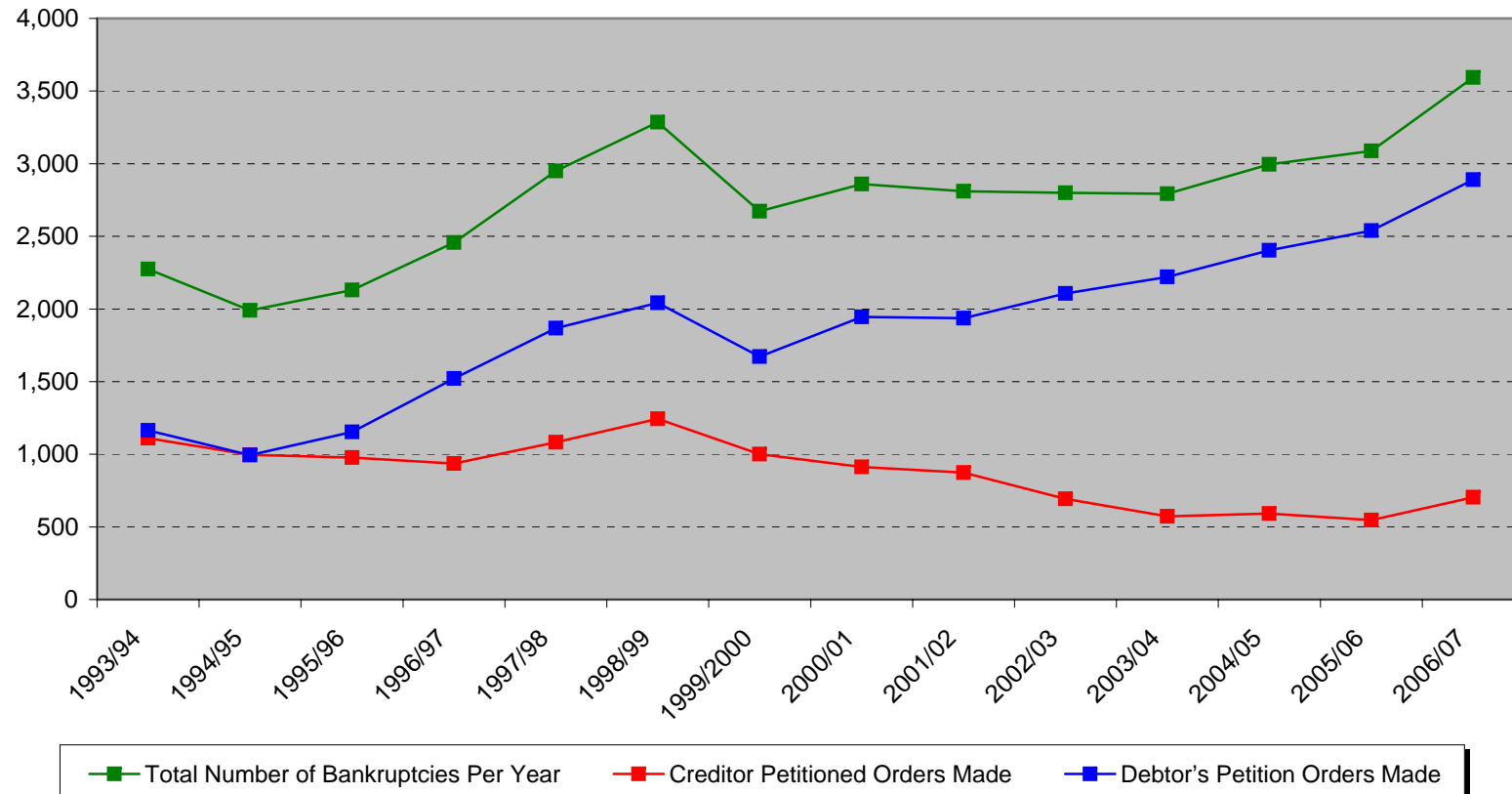
Annual Debtor's vs Creditor's Petition Numbers as a Percentage



NZ Bankruptcy Creditor vs Debtor Petitions Volumes Per Financial Year

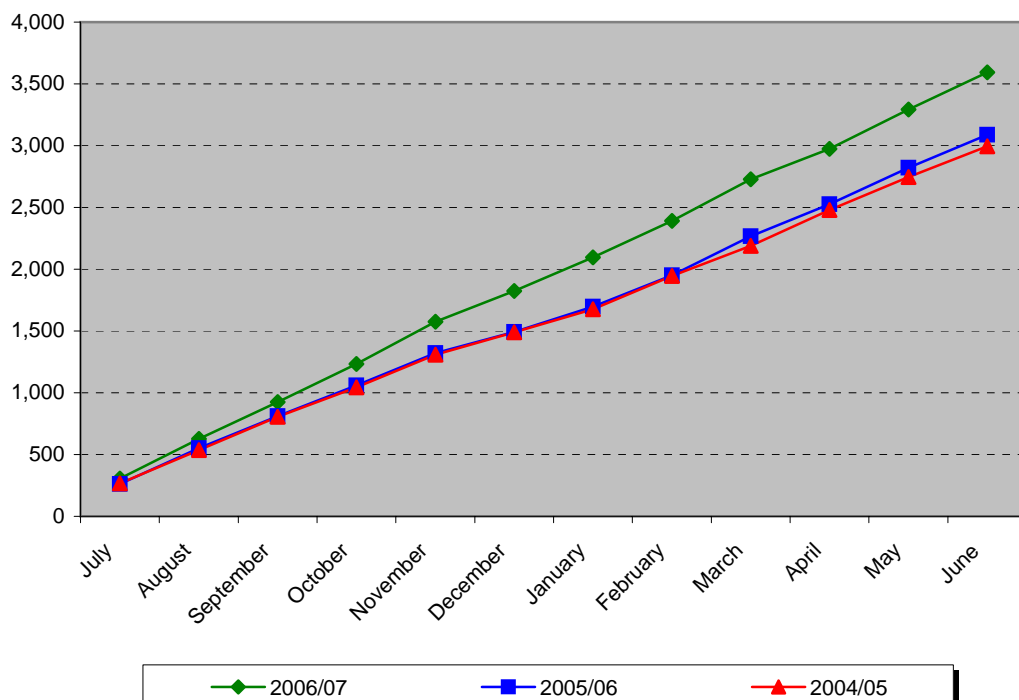


NZ Bankruptcy Creditor vs Debtor Petitions Volumes Per Financial Year

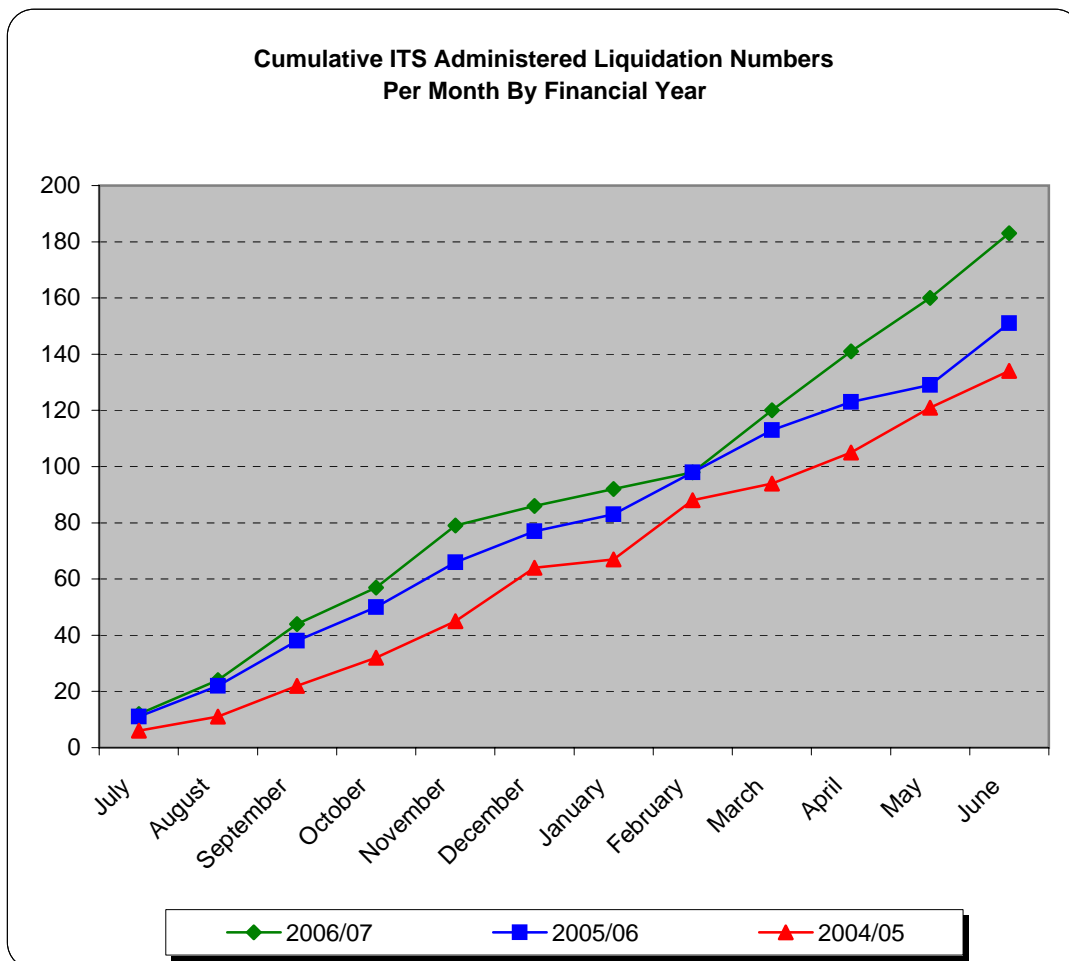


Cumulative NZ Bankruptcy Numbers Per Month by Financial Year			
Month	2006/07	2005/06	2004/05
July	305	261	266
August	627	551	535
September	925	810	806
October	1,234	1,059	1,043
November	1,575	1,322	1,307
December	1,825	1,493	1,490
January	2,097	1,697	1,676
February	2,392	1,950	1,946
March	2,729	2,266	2,190
April	2,973	2,527	2,480
May	3,294	2,822	2,745
June	<b>3,593</b>	<b>3,087</b>	<b>2,995</b>

Cumulative NZ Bankruptcy Numbers Per Month By Financial Year

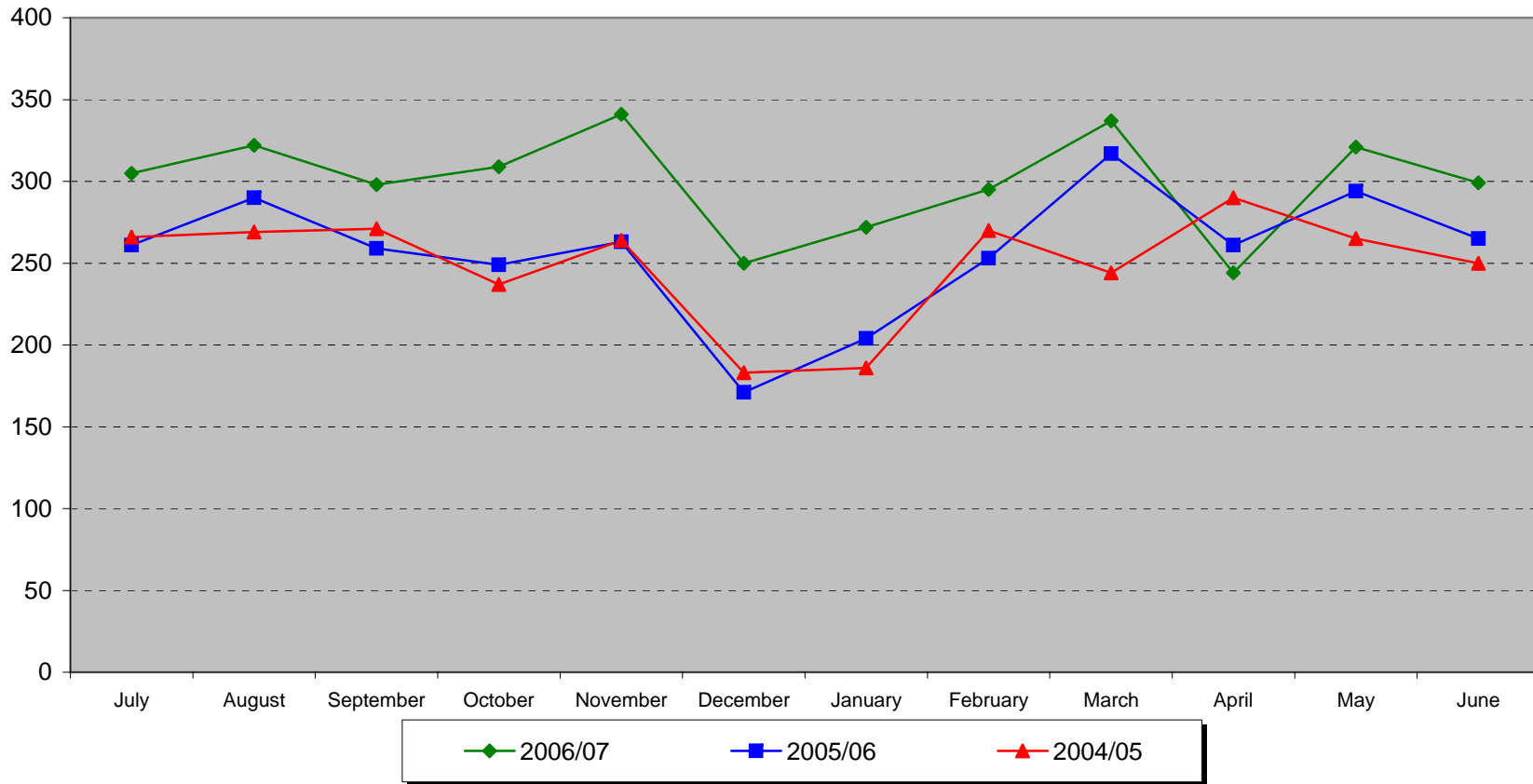


Cumulative ITS Administered Liquidation Numbers Per Month by Financial Year			
Month	2006/07	2005/06	2004/05
July	12	11	6
August	24	22	11
September	44	38	22
October	57	50	32
November	79	66	45
December	86	77	64
January	92	83	67
February	98	98	88
March	120	113	94
April	141	123	105
May	160	129	121
<b>June</b>	<b>183</b>	<b>151</b>	<b>134</b>

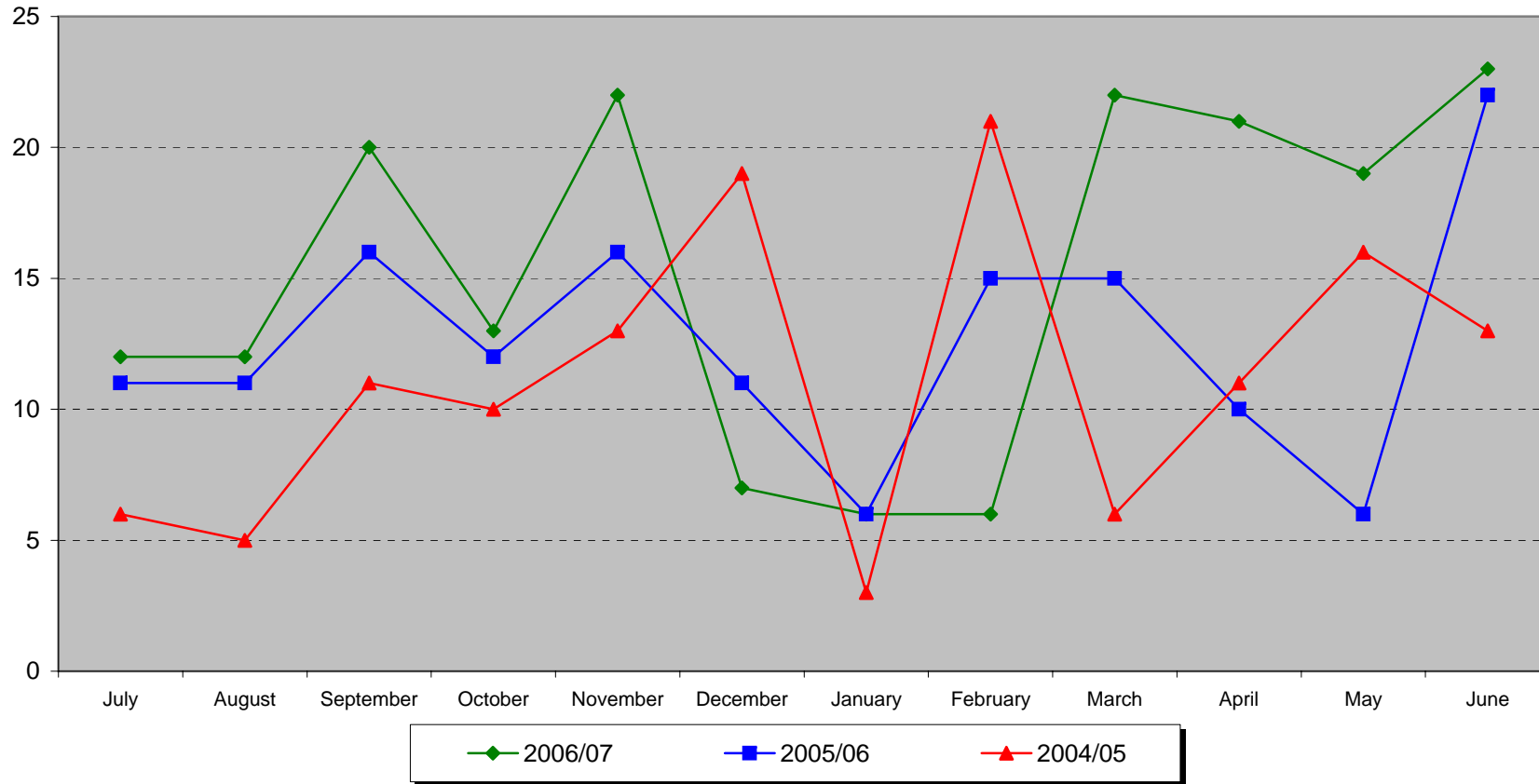


NZ Bankruptcy Numbers and ITS Administered Liquidation Numbers Per Financial Year						
Month	NZ Bankruptcy Numbers			ITS Administered Liquidation Numbers		
	2006/07	2005/06	2004/05	2006/07	2005/06	2004/05
July	305	261	266	12	11	6
August	322	290	269	12	11	5
September	298	259	271	20	16	11
October	309	249	237	13	12	10
November	341	263	264	22	16	13
December	250	171	183	7	11	19
January	272	204	186	6	6	3
February	295	253	270	6	15	21
March	337	317	244	22	15	6
April	244	261	290	21	10	11
May	321	294	265	19	6	16
June	299	265	250	23	22	13
	<b>3,593</b>	<b>3,087</b>	<b>2,995</b>	<b>183</b>	<b>151</b>	<b>134</b>

New Zealand Bankruptcy Numbers Per Month By Financial Year



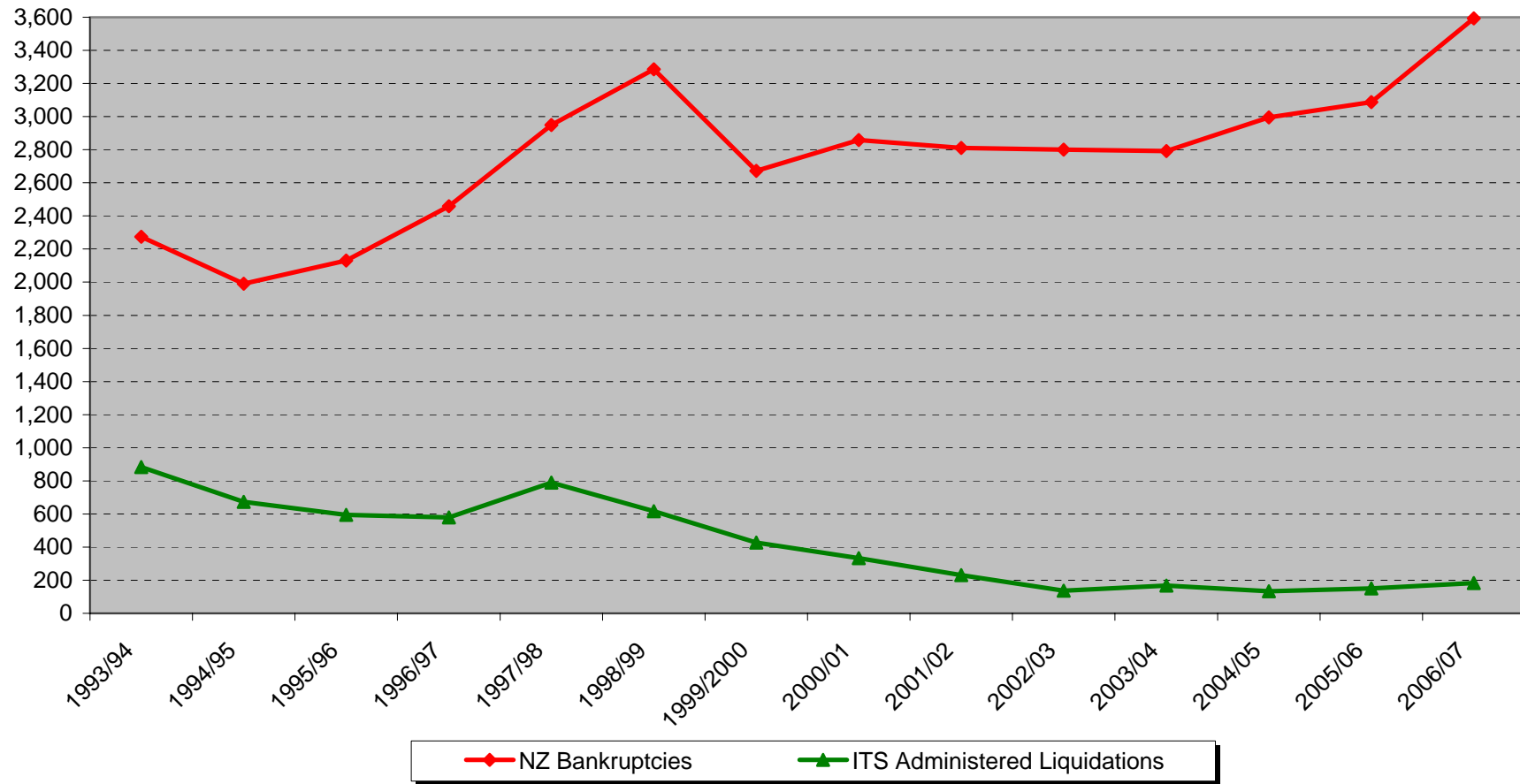
ITS Administered Liquidation Numbers Per Month By Financial Year



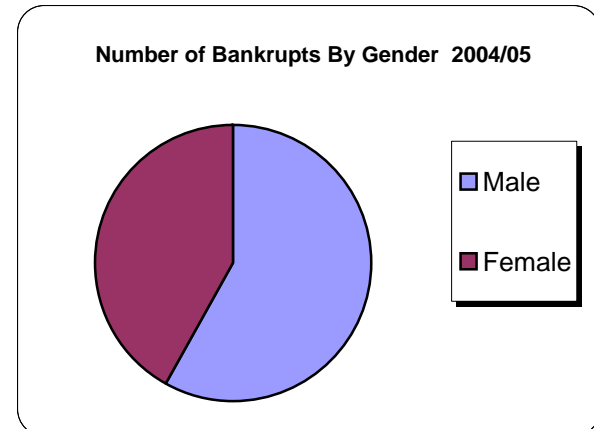
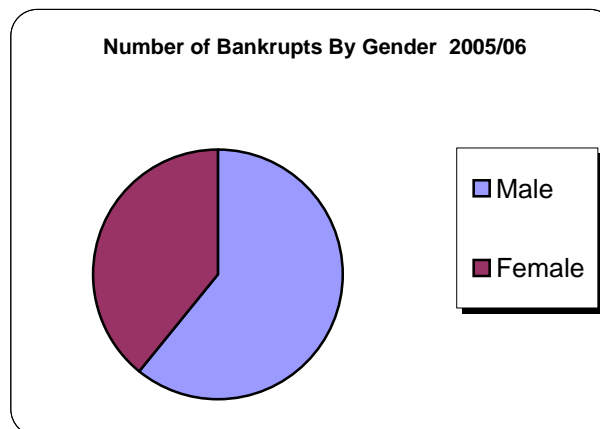
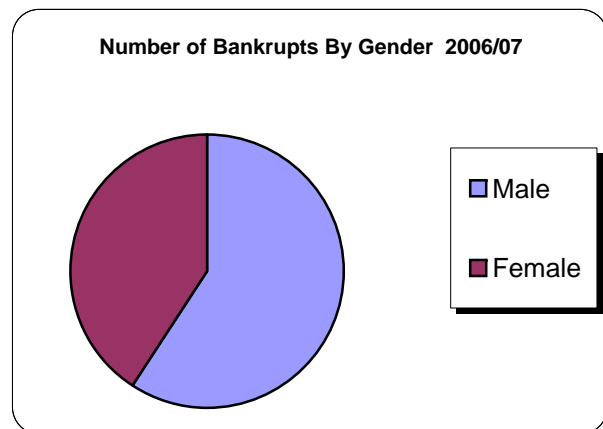


<b>NZ Bankruptcy Numbers and ITS Administered Liquidation Numbers Per Financial Year</b>		
<b>1 July - 30 June</b>	<b>NZ Bankruptcies</b>	<b>ITS Administered Liquidations</b>
1993/94	2,274	884
1994/95	1,991	673
1995/96	2,130	594
1996/97	2,458	579
1997/98	2,949	789
1998/99	3,285	616
1999/2000	2,673	427
2000/01	2,859	333
2001/02	2,811	230
2002/03	2,800	137
2003/04	2,792	167
2004/05	2,995	134
2005/06	3,087	151
2006/07	3,593	183
	<b>38,697</b>	<b>5,897</b>

NZ Bankruptcy Per Financial Year



Gender	2006/07	2006/07 %	2005/06	2005/06 %	2004/05	2004/05 %
Male	2,176	61	1,821	59	1,731	58
Female	1,403	39	1,252	41	1,251	42
<b>Total Human Bankruptcies</b>	<b>3,579</b>	<b>100%</b>	<b>3,073</b>	<b>100%</b>	<b>2,982</b>	<b>100%</b>
Partnerships	14	n/a	14	n/a	13	n/a
<b>Total Bankruptcies</b>	<b>3,593</b>	<b>n/a</b>	<b>3,087</b>	<b>n/a</b>	<b>2,995</b>	<b>n/a</b>

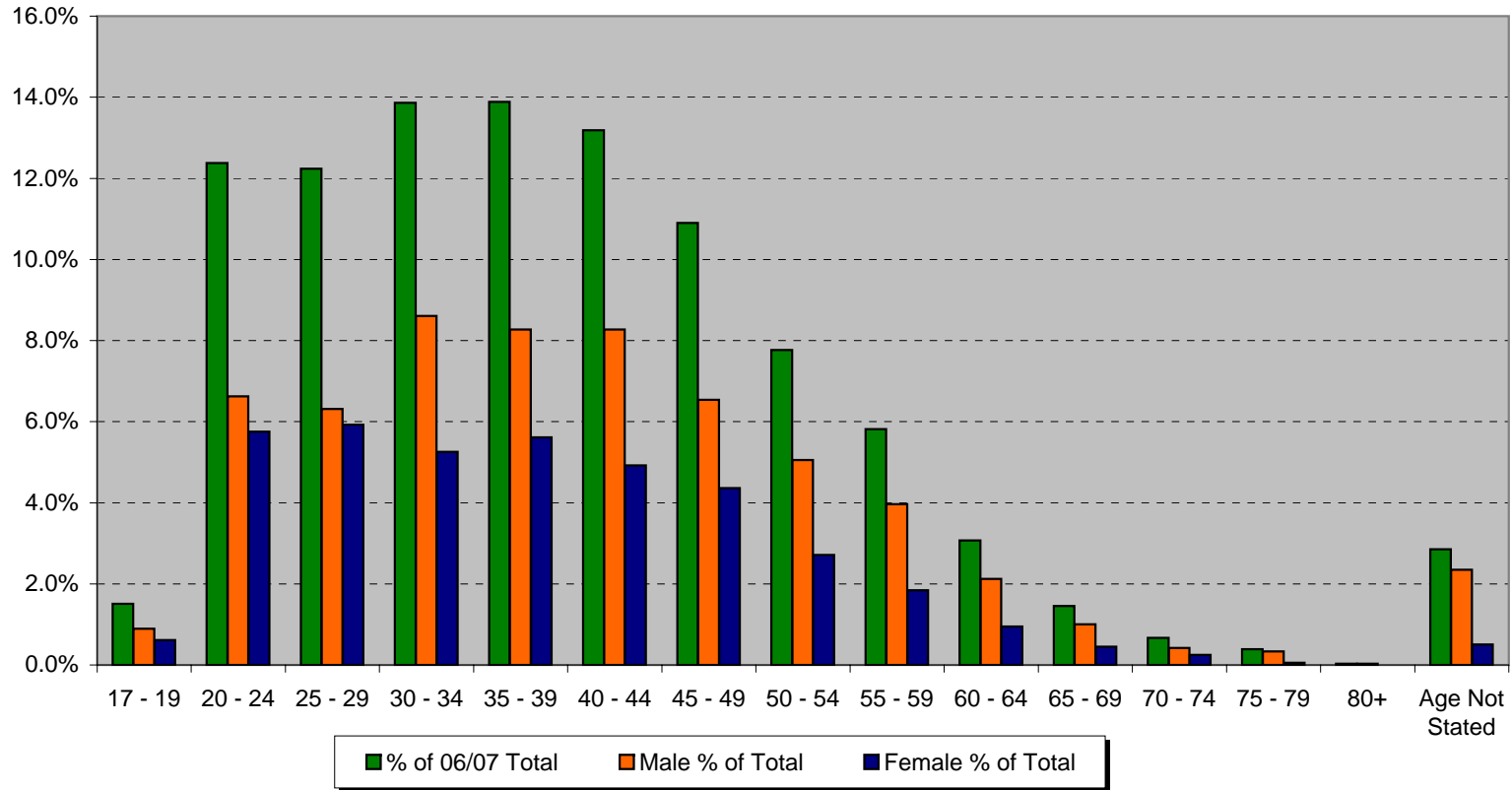


Age & Gender Breakdown of NZ Bankruptcies by Year														
Age Groups (years)	2006/07						2005/06				2004/05			
	Totals 06/07	% of 06/07 Total	Male 06/07	Male % of Total	Female 06/07	Female % of Total	Totals 05/06	% of 05/06 Total	Male 05/06	Female 05/06	Totals 04/05	% of 04/05 Total	Male 04/05	Female 04/05
17 - 19	54	1.5%	32	0.9%	22	0.6%	32	1.0%	19	13	19	0.6%	13	6
20 - 24	443	12.4%	237	6.6%	206	5.8%	363	11.8%	202	161	318	10.7%	167	151
25 - 29	438	12.2%	226	6.3%	212	5.9%	376	12.2%	198	178	363	12.2%	188	175
30 - 34	496	13.9%	308	8.6%	188	5.3%	458	14.9%	259	199	413	13.8%	226	187
35 - 39	497	13.9%	296	8.3%	201	5.6%	437	14.2%	260	177	429	14.4%	243	186
40 - 44	472	13.2%	296	8.3%	176	4.9%	383	12.5%	229	154	387	13.0%	213	174
45 - 49	390	10.9%	234	6.5%	156	4.4%	315	10.3%	192	123	345	11.6%	217	128
50 - 54	278	7.8%	181	5.1%	97	2.7%	243	7.9%	149	94	215	7.2%	141	74
55 - 59	208	5.8%	142	4.0%	66	1.8%	156	5.1%	100	56	143	4.8%	88	55
60 - 64	110	3.1%	76	2.1%	34	0.9%	105	3.4%	65	40	86	2.9%	54	32
65 - 69	52	1.5%	36	1.0%	16	0.4%	57	1.9%	33	24	40	1.3%	22	18
70 - 74	24	0.7%	15	0.4%	9	0.3%	26	0.8%	20	6	22	0.7%	15	7
75 - 79	14	0.4%	12	0.3%	2	0.1%	12	0.4%	10	2	12	0.4%	6	6
80+	1	0.0%	1	0.0%	0	0.0%	7	0.2%	4	3	9	0.3%	5	4
Age Not Stated	102	2.8%	84	2.3%	18	0.5%	103	3.4%	81	22	181	6.1%	133	48
<b>Total</b>	<b>3,579</b>	<b>100%</b>	<b>2,176</b>		<b>1,403</b>		<b>3,073</b>	<b>100%</b>	<b>1,821</b>	<b>1,252</b>	<b>2,982</b>	<b>100%</b>	<b>1,731</b>	<b>1,251</b>

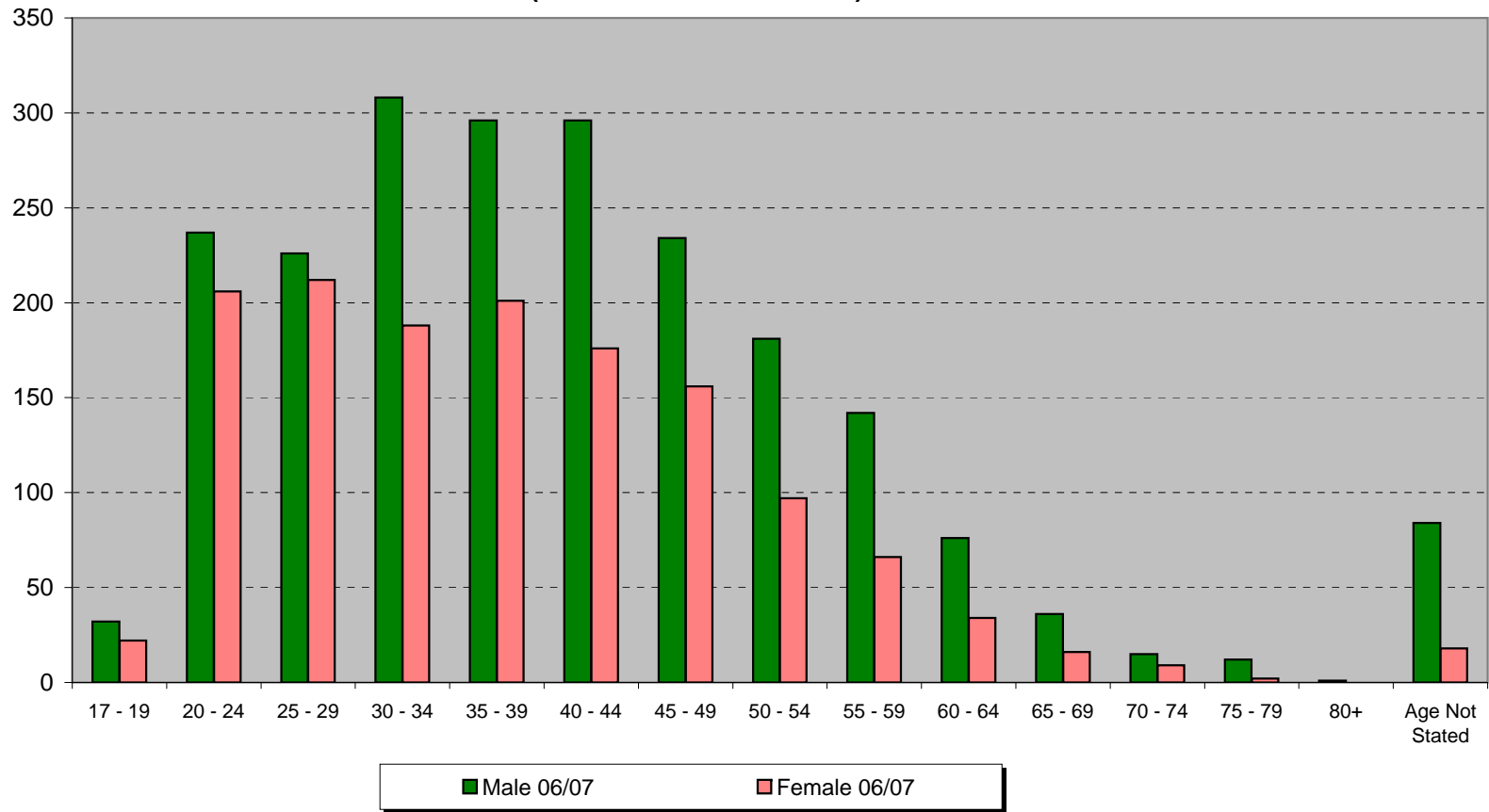
**Comparitive Graphs on Age Group Analysis:**

1. % Bankruptcies by Age and Gender for 2006/07
2. 06/07 Totals Males vs Females
3. 06/07 05/06 04/05 Totals (bar graph)
4. 06/07 05/06 04/05 Totals (line graph)
5. 06/07 05/06 04/05 Male
6. 06/07 05/06 04/05 Female

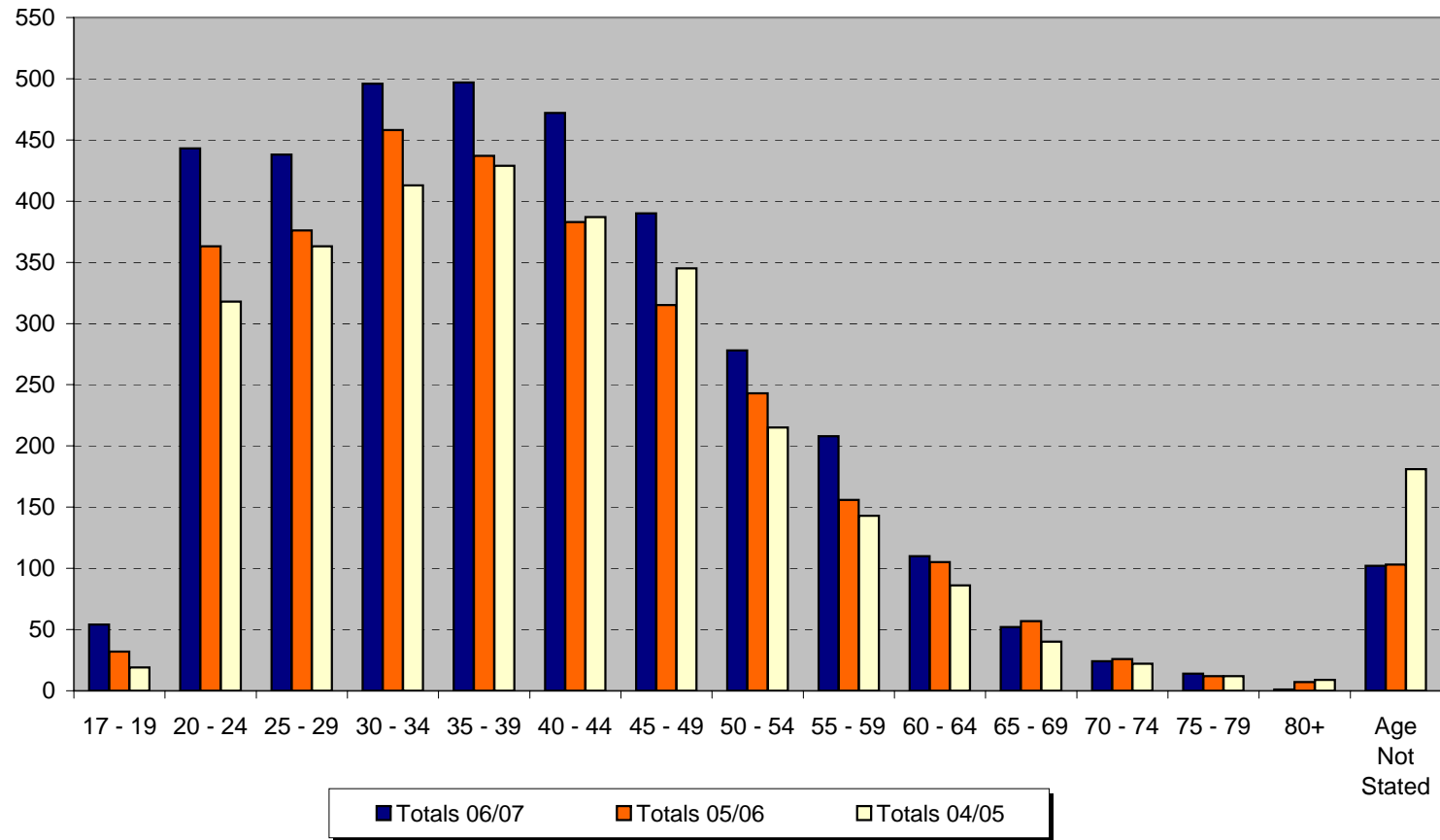
1. % Bankruptcies by Age and Gender for 2006/07



**2. Number of Bankrupts By Age and Gender  
(Totals Males vs Females) 2006/07**

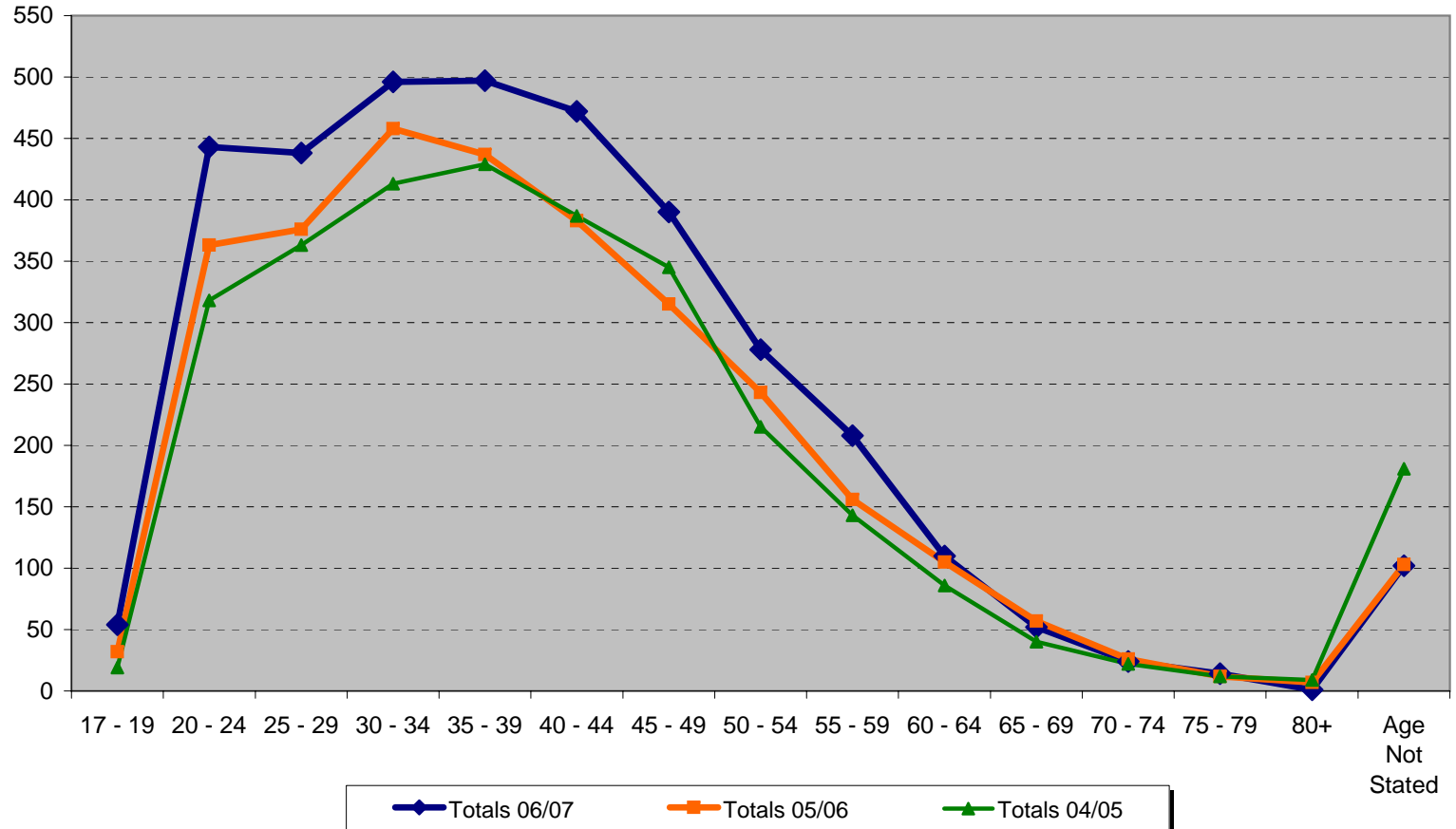


### 3. Total Number of Bankrupts By Age

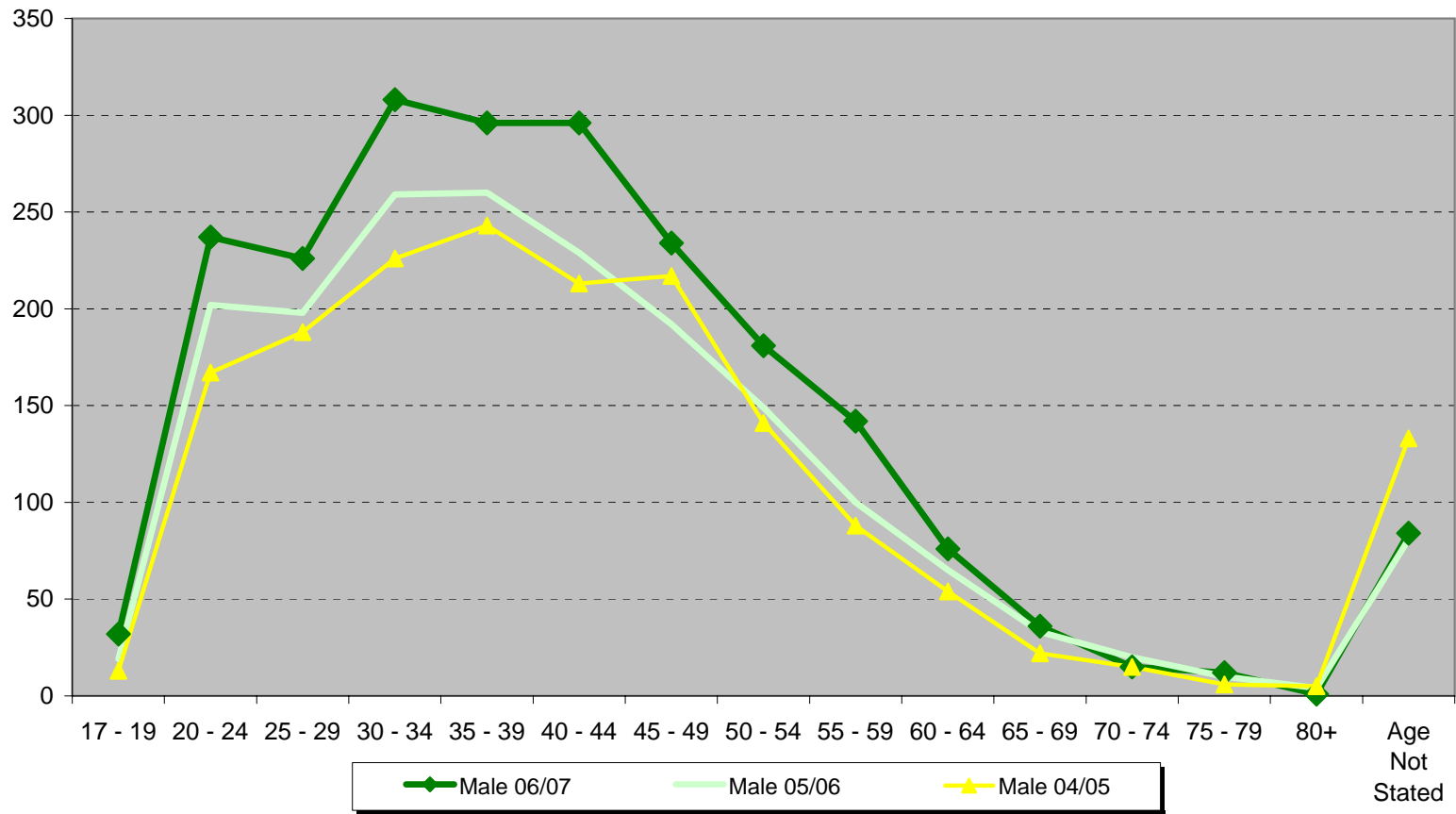




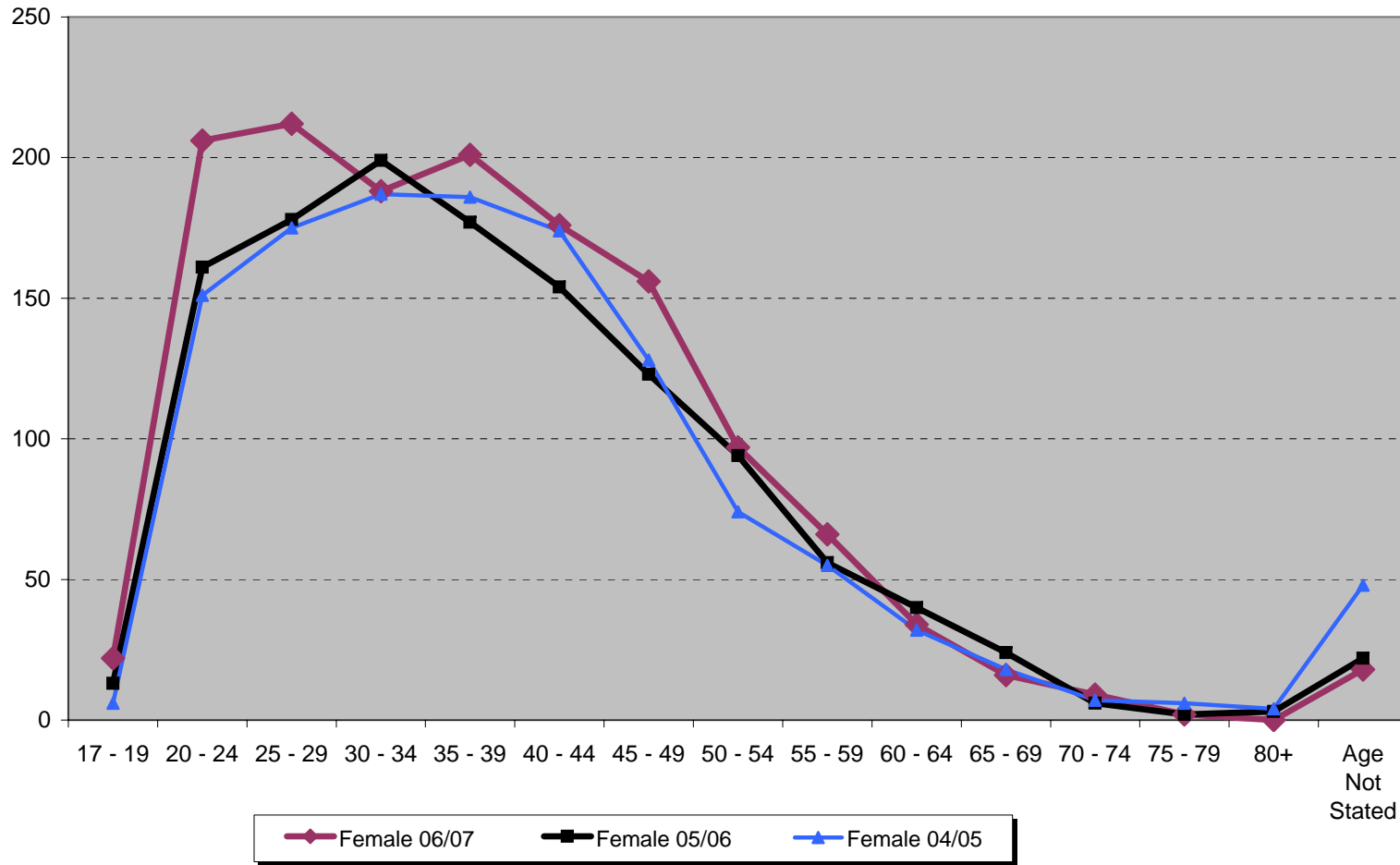
4. Total Number of All Bankrupts By Age



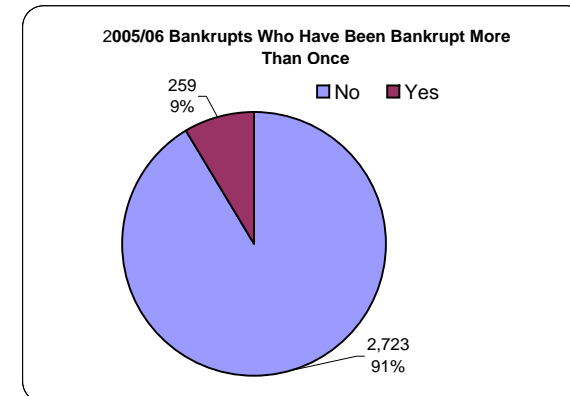
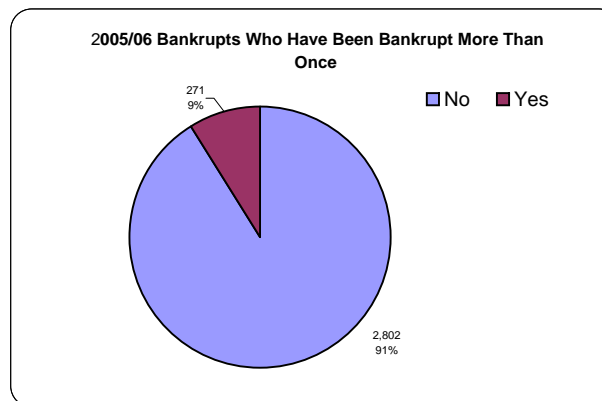
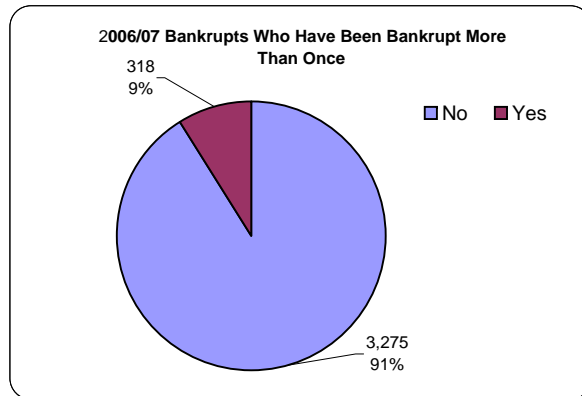
5. Total Number of Male Bankrupts By Age



6. Total Number of Female Bankrupts By Age



Bankrupts Who Have Been Bankrupt More Than Once						
Previously Bankrupt	2006/07	2006/07 %	2005/ 06	2005/06 %	2004/05	2004/05 %
No	3,275	91%	2,802	91%	2,723	91%
Yes	318	9%	271	9%	259	9%
	<b>3,593</b>	<b>100%</b>	<b>3,073</b>	<b>100%</b>	<b>2,982</b>	<b>100%</b>



**Employment Status of Bankrupts at the Date of Adjudication**

Description	Code	06/07	Male 06/07	Female 06/07	05/06	Male 05/06	Female 05/06	04/05	Male 04/05	Female 04/05
Employed (by a 3rd party)	Emp	1693	1183	510	1447	988	459	1474	1005	469
Unemployed - With Benefit	UWB	756	354	402	588	287	301	617	297	320
Unemployed - No Benefit	UNB	436	313	123	408	303	105	309	208	101
Domestic	Dom	267	17	250	322	17	305	304	24	280
Sole Trader	Sole T	139	123	16	126	111	15	65	54	11
Other	Other	126	93	33	68	41	27	45	28	17
Student	Student	65	32	33	37	15	22	43	22	21
Trading in a Partnership	P/Ship	15	8	7	6	4	2	14	8	6
Director of a Limited Liability Company	Coy	9	8	1	12	11	1	11	9	2
No Response	No Res	73	45	28	59	44	15	100	76	24
		<b>3579</b>	<b>2176</b>	<b>1403</b>	<b>3073</b>	<b>1821</b>	<b>1252</b>	<b>2982</b>	<b>1731</b>	<b>1251</b>

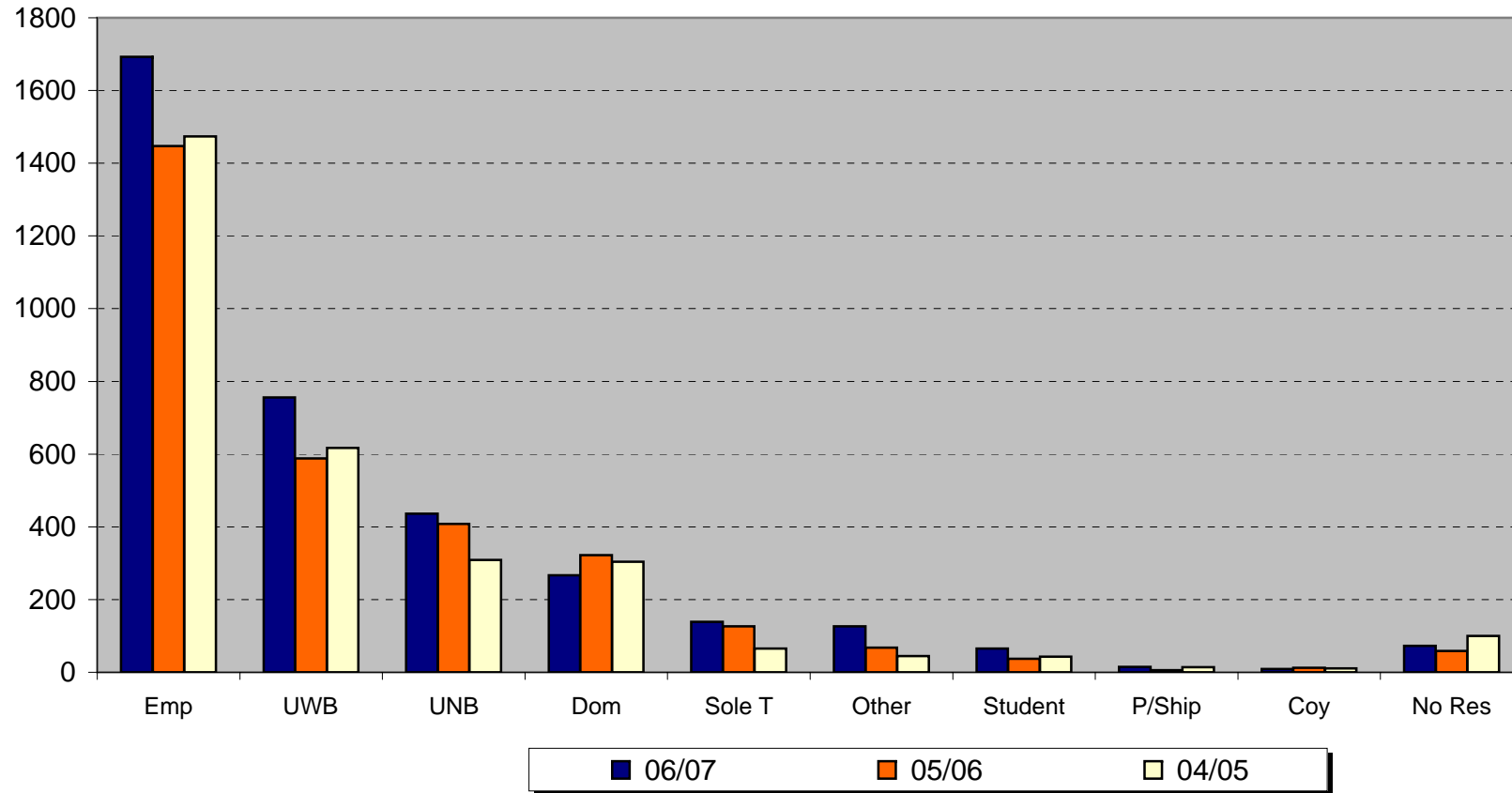
**Employment Status of Bankrupts at the Date of Adjudication**

Description	Code	% Total 06/07	% Male 06/07	% Female 06/07	Total 05/06	Male 05/06	Female 05/06	Total 04/05	Male 04/05	Female 04/05
Employed (by a 3rd party)	Emp	47%	54%	36%	47%	54%	37%	49%	58%	37%
Unemployed - With Benefit	UWB	21%	16%	29%	19%	16%	24%	21%	17%	26%
Unemployed - No Benefit	UNB	12%	14%	9%	13%	17%	8%	10%	12%	8%
Domestic	Dom	7%	1%	18%	10%	1%	24%	10%	1%	22%
Sole Trader	Sole T	4%	6%	1%	4%	6%	1%	2%	3%	1%
Other	Other	4%	4%	2%	2%	2%	2%	2%	2%	1%
Student	Student	2%	1%	2%	1%	1%	2%	1%	1%	2%
Trading in a Partnership	P/Ship	0%	0%	0%	0%	0%	0%	0%	0%	0%
Director of a Limited Liability Company	Coy	0%	0%	0%	0%	1%	0%	0%	1%	0%
No Response	No Res	2%	2%	2%	2%	2%	1%	3%	4%	2%
		<b>1</b>	<b>1</b>	<b>1</b>	<b>1</b>	<b>1</b>	<b>1</b>	<b>2982</b>	<b>1731</b>	<b>1251</b>

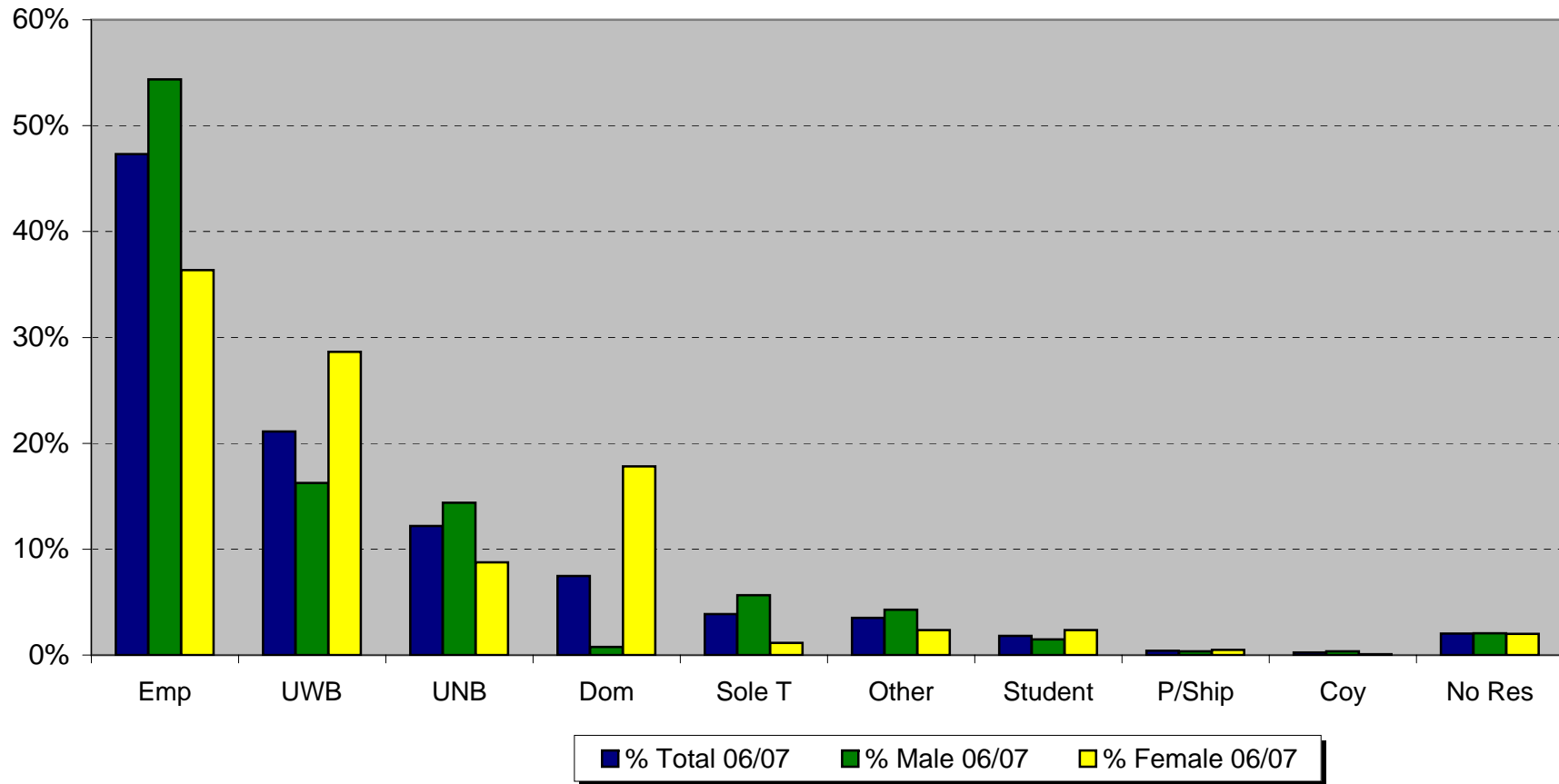
**Comparitive Graphs on Employment Status of Bankrupts at Date of Adjudication:**

1. 06/07 05/06 04/05 Totals
2. Employment Status of Bankrupts at Date of Adjudication as a Percentage of the Total
3. 05/06 Totals Males vs Females
4. 06/07 05/06 04/05 Male
5. 06/07 05/06 04/05 Female

### 1. Employment Status of Bankrupts at Date of Adjudication

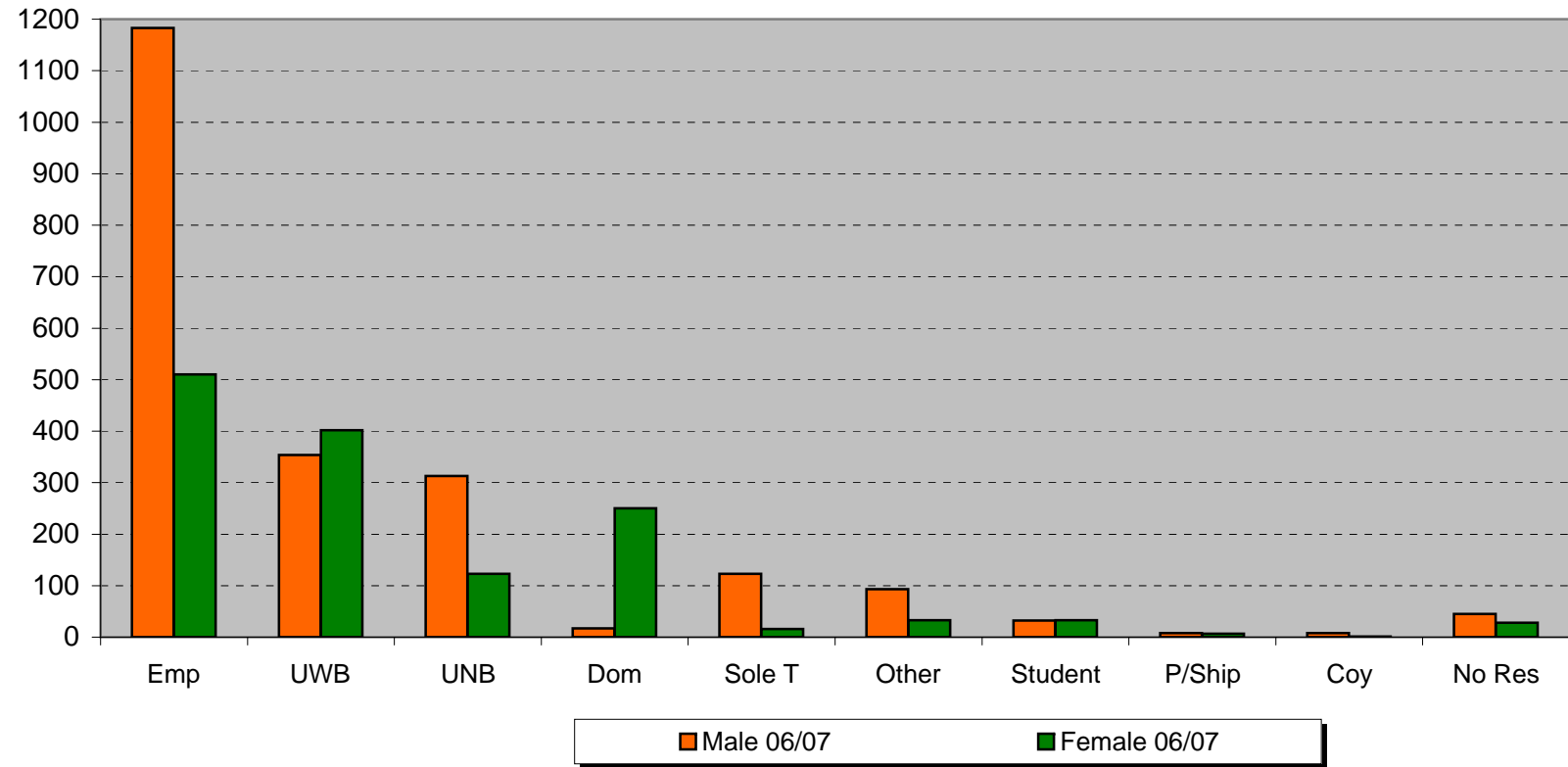


## 2. Employment Status of Bankrupts at Date of Adjudication as a Percentage of the Total

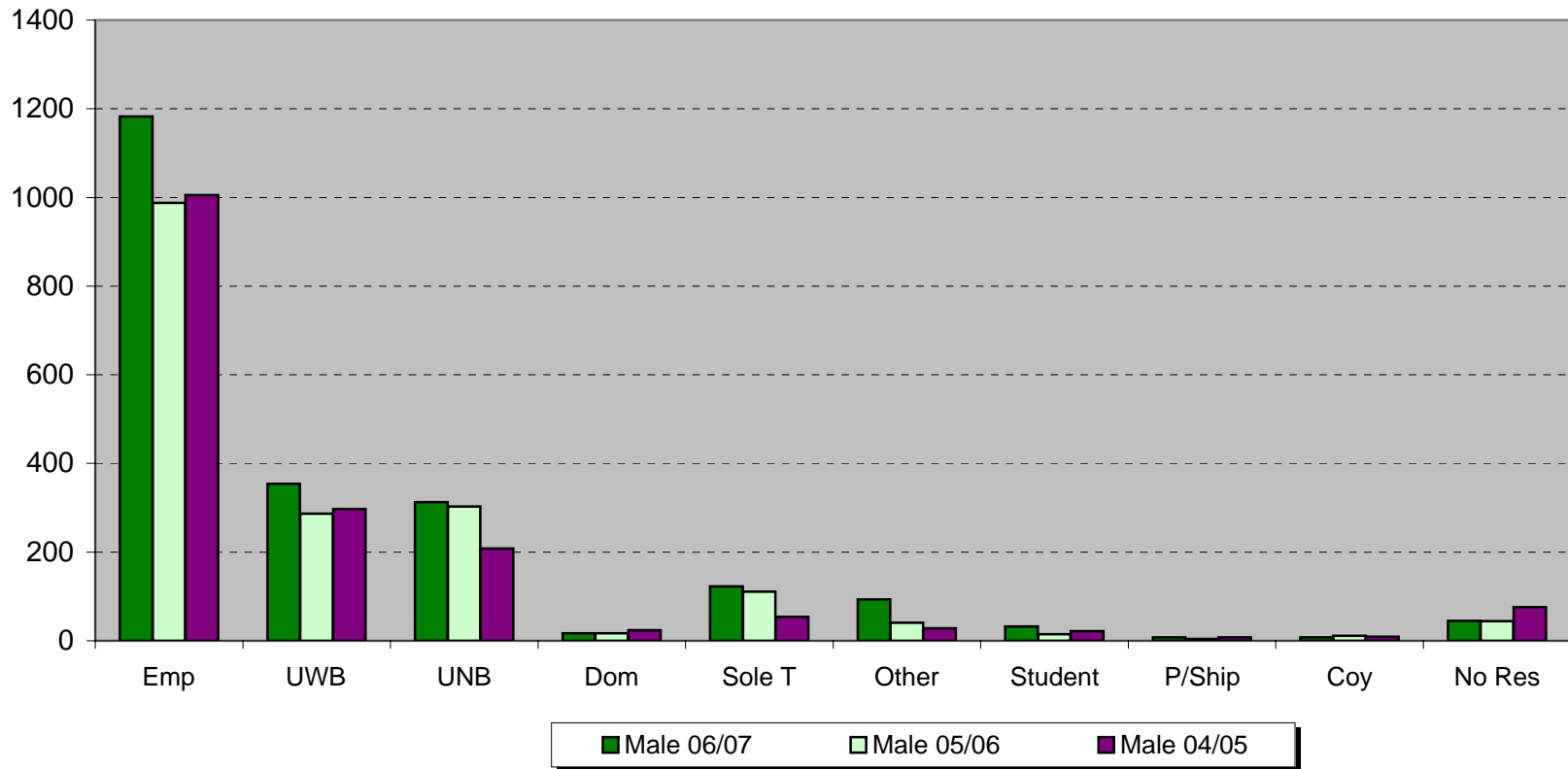




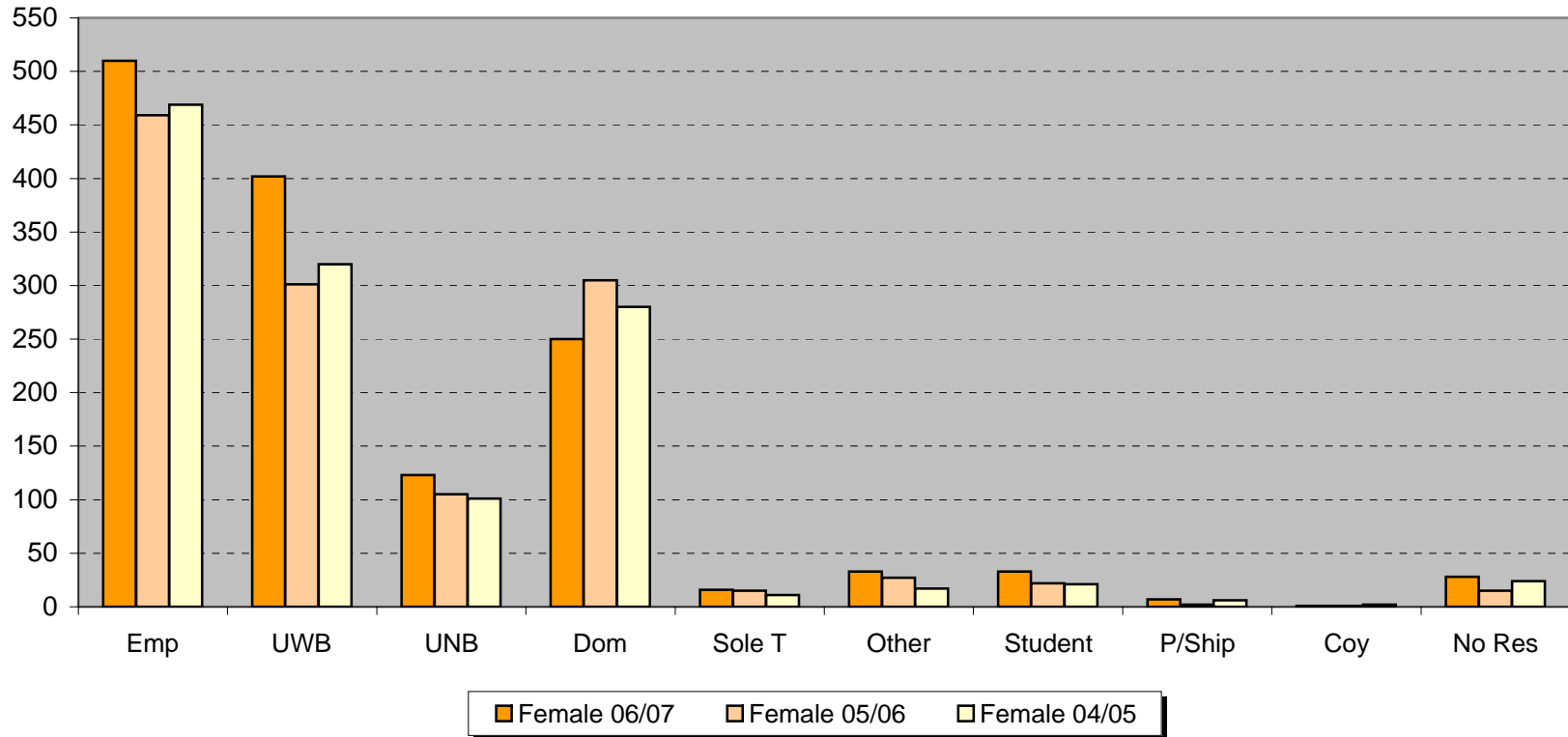
### 3. Employment Status of Female Bankrupts at Date of Adjudication



#### 4. Employment Status of Male Bankrupts at Date of Adjudication

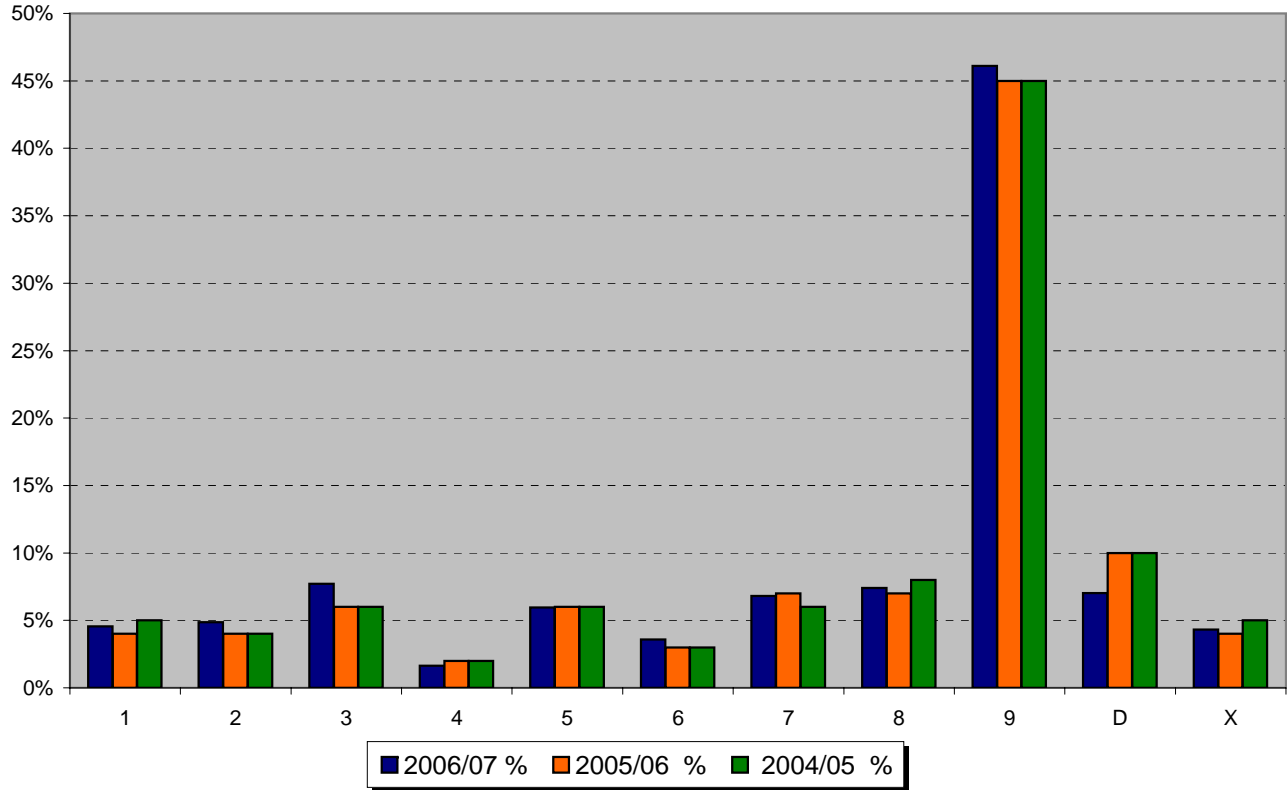


### 5. Employment Status of Female Bankrupts at Date of Adjudication



Occupation of NZ Bankrupts at Their Date of Adjudication							
Major Group Name	Group Code	2006/07	2006/07 %	2005/06	2005/06 %	2004/05	2004/05 %
Legislators, Administrators and Managers	1	164	5%	130	4%	146	5%
Professionals	2	175	5%	131	4%	121	4%
Associate Professionals and Technicians	3	277	8%	197	6%	166	6%
Clerks	4	59	2%	65	2%	64	2%
Service and Sales Workers	5	214	6%	185	6%	190	6%
Agriculture and Fishery Worker	6	129	4%	93	3%	102	3%
Trades Workers	7	245	7%	228	7%	183	6%
Plant and Machine Operators and Assemblers	8	266	7%	215	7%	246	8%
Elementary Occupations	9	1657	46%	1372	45%	1339	45%
Domestic	D	252	7%	321	10%	289	10%
No Response	X	155	4%	136	4%	136	5%
<b>Total:</b>		<b>3593</b>	<b>100%</b>	<b>3073</b>	<b>100%</b>	<b>2982</b>	<b>100%</b>

Statistical Occupation of Bankrupts 2006/07 2005/06 2004/05



**Notes:**

Group 9 has the largest representation amongst bankrupts in New Zealand.

The main occupations within this group include:

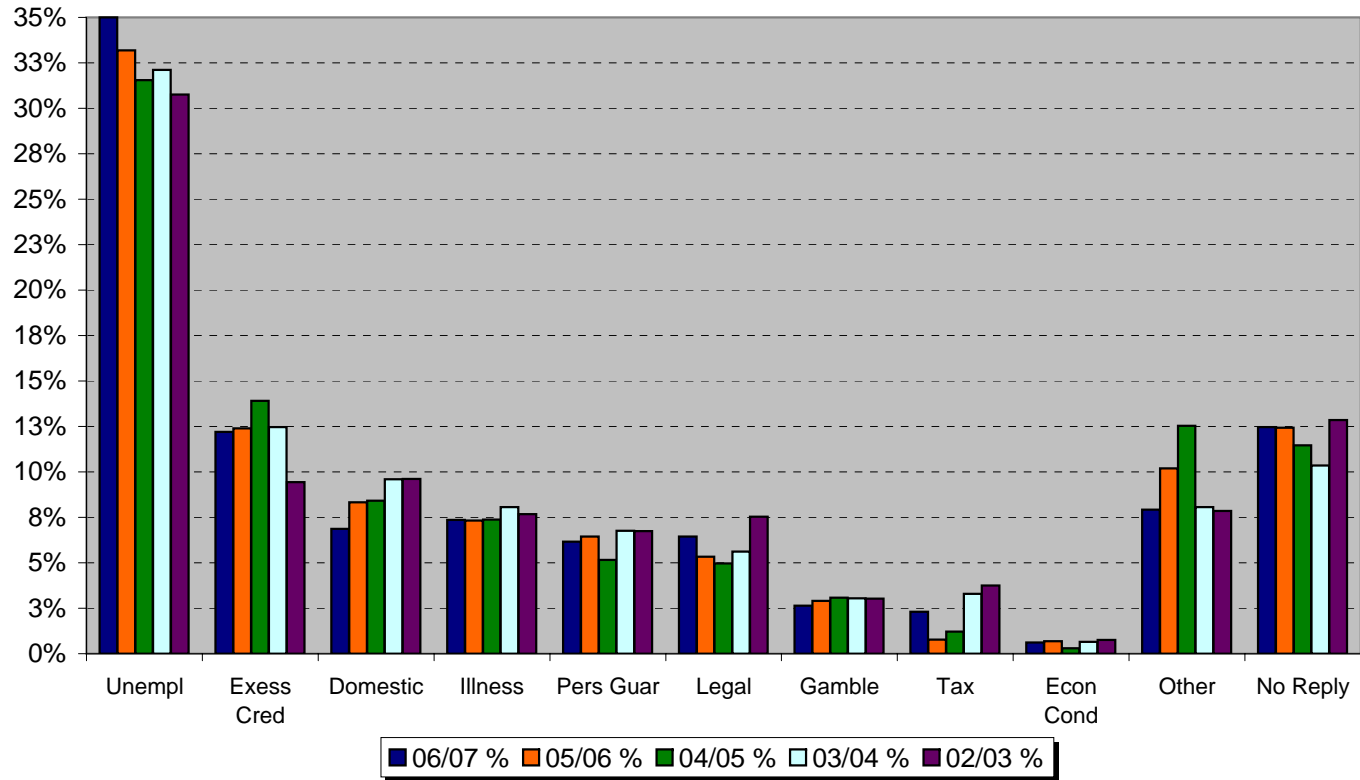
Cleaners, care-takers, pest controllers, couriers and delivery personnel, street and park cleaners, hotel porters, packers, loaders, checkers and labourers

The statistical occupation field for bankrupts in the ITS database is based on the Statistics New Zealand classification on their website at:

<http://www.stats.govt.nz/statistical-methods/classifications/nz-standard-class-of-occupations-1999.htm>

Major Reason Given as Cause of Bankruptcy	Code	2006/07	2005/06	2004/05	2003/04	2002/03
Unemployment or loss of income	Unempl	1233	1020	941	897	861
Excessive use of credit facilities	Exess Cred	430	381	415	348	264
Domestic discord or relationship breakdowns	Domestic	242	256	251	268	269
Ill health or absence of health insurance	Illness	259	225	220	225	215
Liabilities due to guarantees	Pers Guar	217	198	154	189	189
Adverse legal action	Legal	227	164	148	157	211
Gambling, speculation and extravagance in living	Gamble	93	89	92	85	85
Failure to provide for taxation	Tax	81	24	36	92	105
Economic conditions affecting industry	Econ Cond	22	21	9	18	21
Other	Other	279	313	374	225	220
No Response	No Reply	439	382	342	289	360
		<b>3522</b>	<b>3073</b>	<b>2982</b>	<b>2793</b>	<b>2800</b>

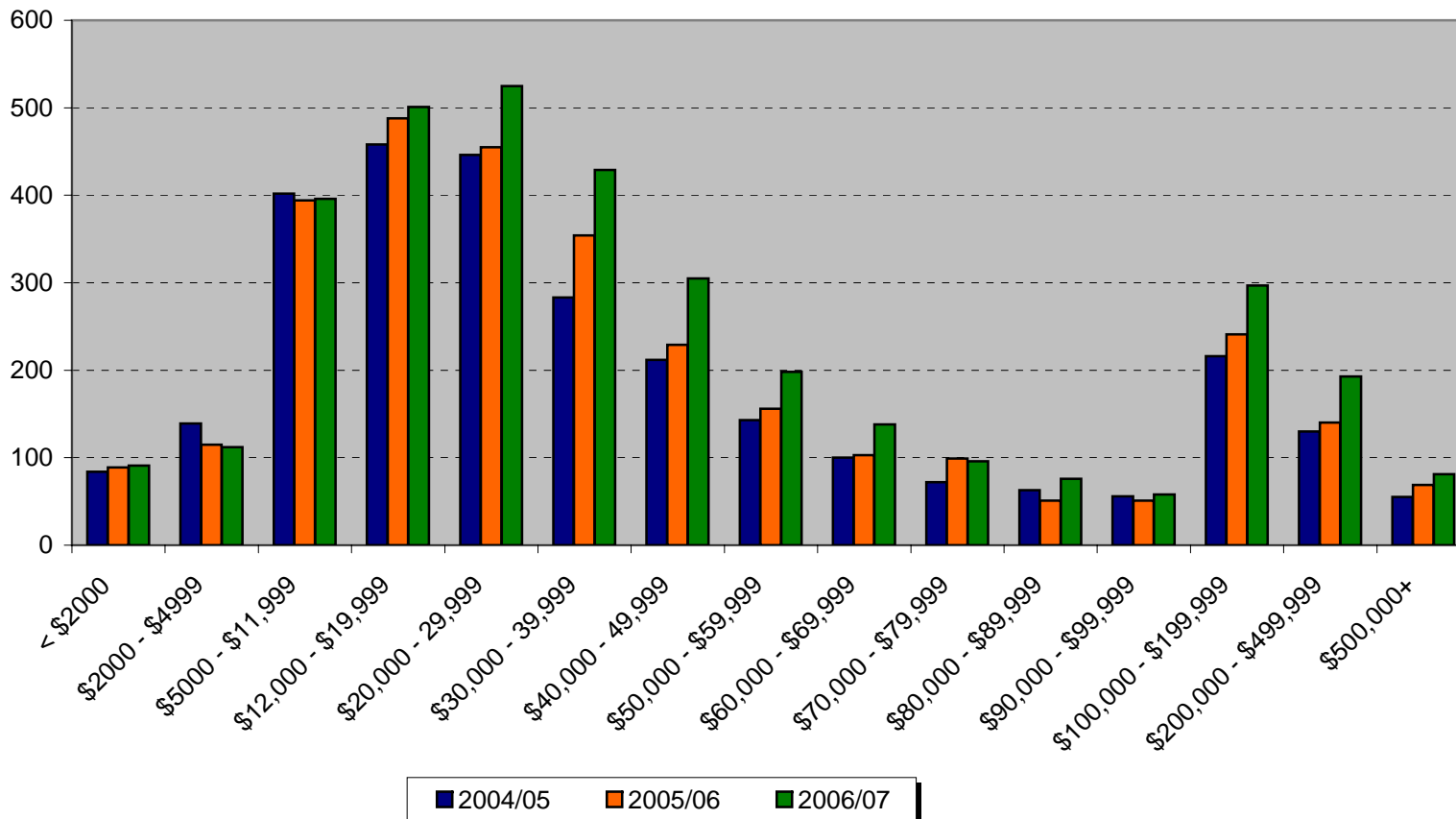
**% of Bankrupts Who Attribute a Specific Cause for Their Bankruptcy for the Financial Years 2002/03, 2003/04, 2004/05, 2005/06, 2006/07**





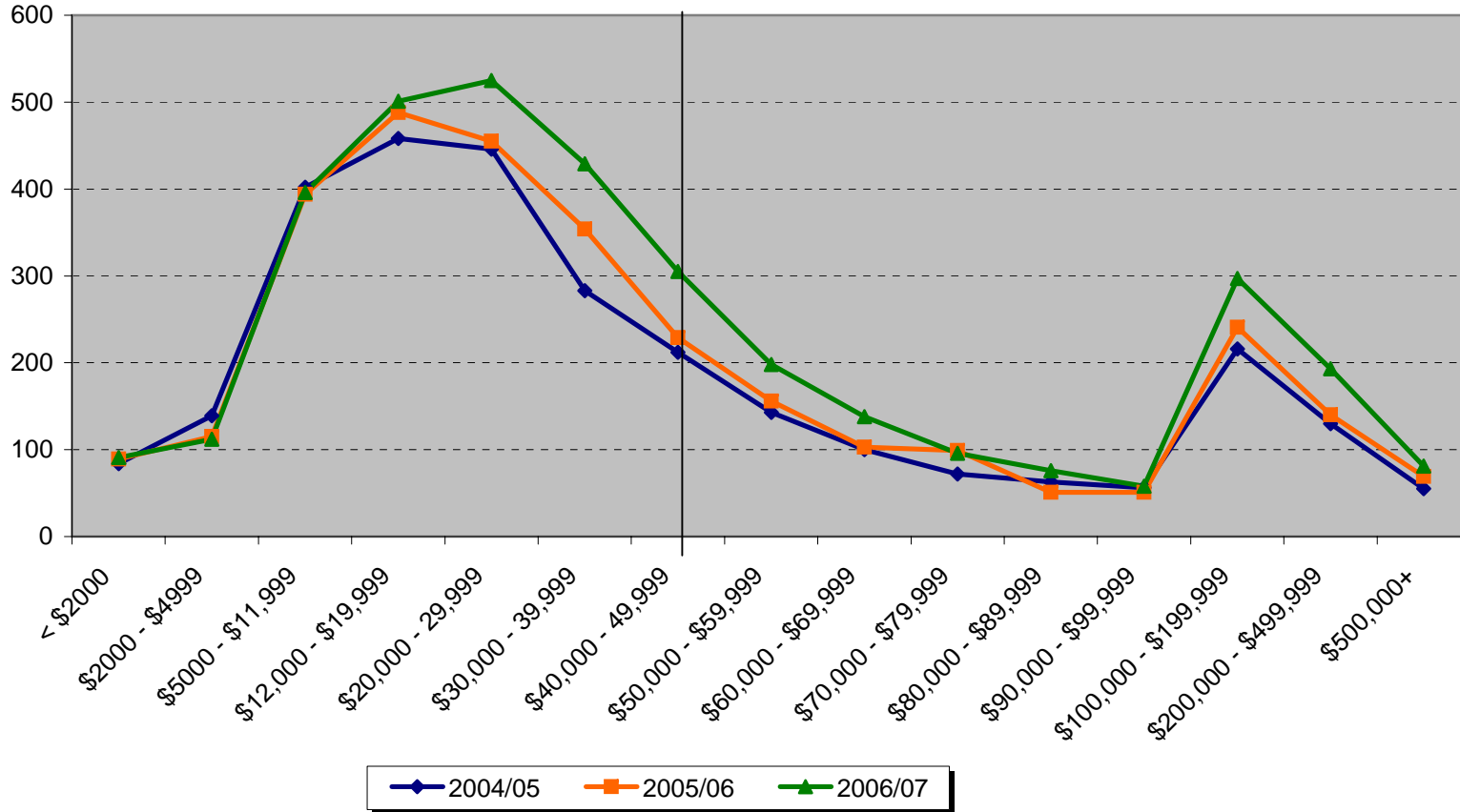
<b>Debt Levels in NZ Bankruptcies Per Financial Year</b>			
<b>Debt Level</b>	<b>2004/05</b>	<b>2005/06</b>	<b>2006/07</b>
< \$2000	84	89	91
\$2000 - \$4999	139	115	112
\$5000 - \$11,999	402	394	396
\$12,000 - \$19,999	458	488	501
\$20,000 - 29,999	446	455	525
\$30,000 - 39,999	283	354	429
\$40,000 - 49,999	212	229	305
\$50,000 - \$59,999	143	156	198
\$60,000 - \$69,999	100	103	138
\$70,000 - \$79,999	72	99	96
\$80,000 - \$89,999	63	51	76
\$90,000 - \$99,999	56	51	58
\$100,000 - \$199,999	216	241	297
\$200,000 - \$499,999	130	140	193
\$500,000+	55	69	81
	<b>2859</b>	<b>3034</b>	<b>3496</b>

Debt Levels in NZ Bankruptcies

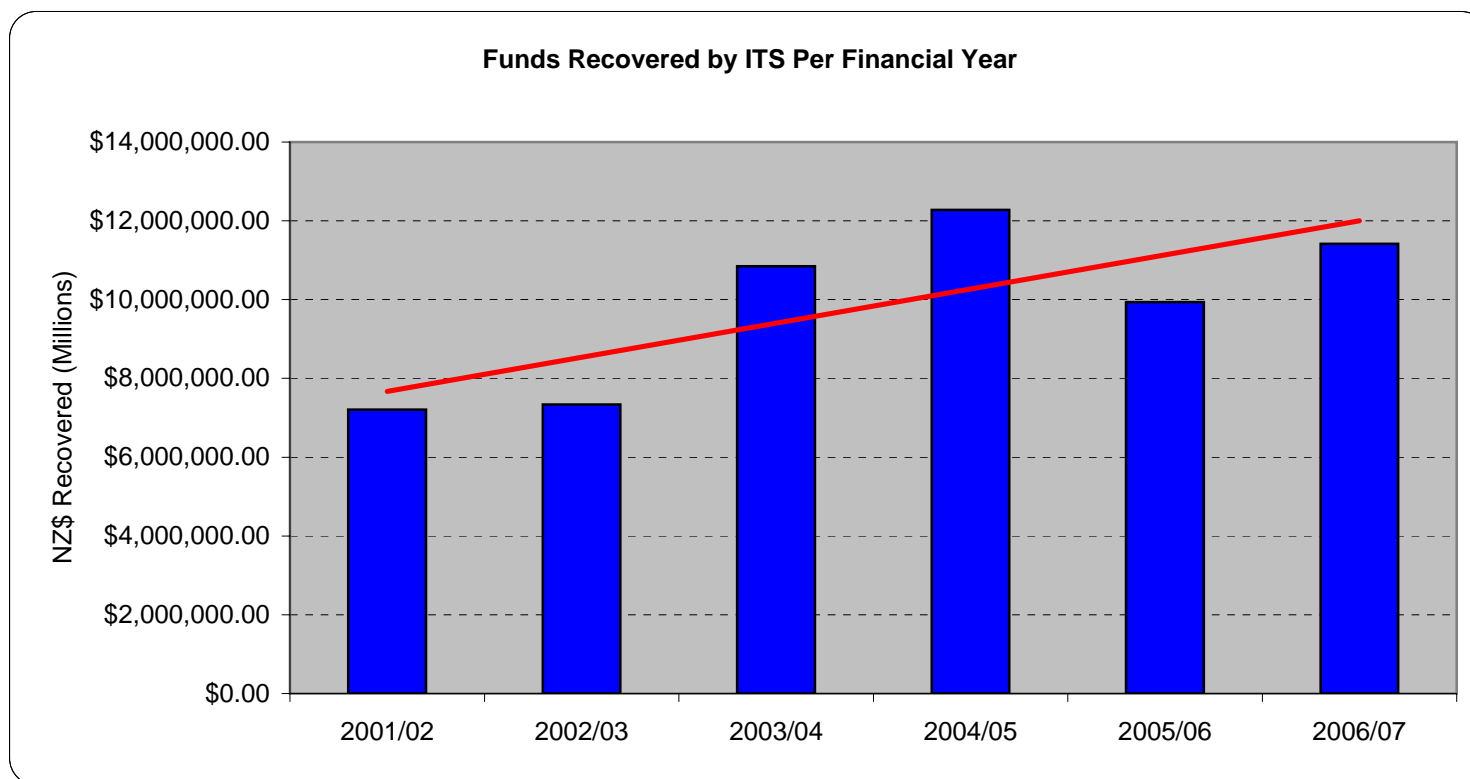


**Debt Levels in Bankruptcy**

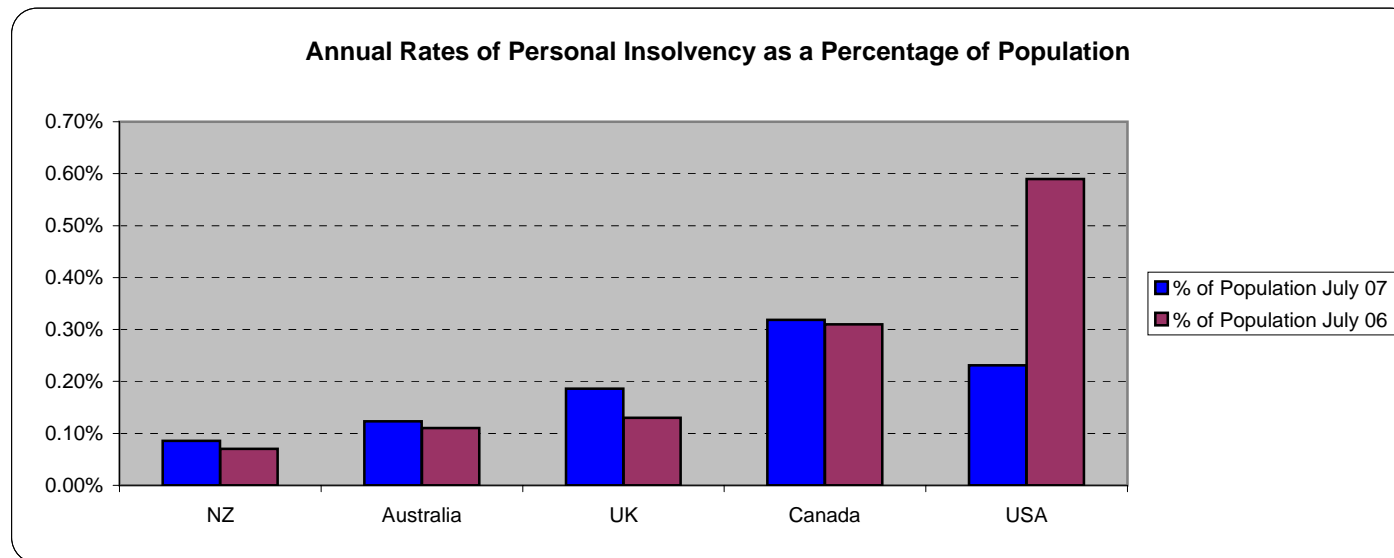
Changes to the Insolvency Act 2006 will mean that people with debt levels of below \$40,000 may qualify for a no asset procedure or SIO provided other criteria are met.



Funds Recovered by ITS Per Financial Year							
Financial Year	2001/02	2002/03	2003/04	2004/05	2005/06	2006/07	TOTAL
Funds Recovered	\$7,205,628.14	\$7,336,141.03	\$10,845,761.14	\$12,274,392.48	\$9,940,067.75	11,414,936.16	\$59,016,926.70



Annual Rates of Personal Insolvency as a Percentage of Population						
Country	Est. Population at 19 July 2007	Number of Bankrupts for a 12 month period	% of Population July 07	Est. Population at 1 July 2006	Number of Bankrupts for a 12 month period	% of Population July 06
NZ	4,185,113	3,594	0.09%	4,142,768	3,073	0.07%
Australia	20,434,176	25,242	0.12%	20,264,082	23,188	0.11%
UK	60,776,238	113,089	0.19%	60,609,153	77,468	0.13%
Canada	33,390,141	106,415	0.32%	33,098,932	102,662	0.31%
USA	301,139,947	695,575	0.23%	298,444,215	1,759,503	0.59%



**Population Estimates Obtained From:**

NZ: [www.stats.govt.nz](http://www.stats.govt.nz)

Australia: [www.cia.gov/cia/publications/factbook/geos/as.html](http://www.cia.gov/cia/publications/factbook/geos/as.html)

UK: [www.cia.gov/cia/publications/factbook/geos/uk.html](http://www.cia.gov/cia/publications/factbook/geos/uk.html)

Canada: [www.cia.gov/cia/publications/factbook/geos/ca.html](http://www.cia.gov/cia/publications/factbook/geos/ca.html)

USA: [www.cia.gov/cia/publications/factbook/geos/us.html](http://www.cia.gov/cia/publications/factbook/geos/us.html)

**International Bankruptcy Numbers Obtained From:**

Australia: [www.itsa.gov.au/dir228/itsaweb.nsf/docindex/Statistics->Business%20Statistics->Business%20Statistics%20Documents/\\$FILE/Business\\_05-06.xls?OpenElement](http://www.itsa.gov.au/dir228/itsaweb.nsf/docindex/Statistics->Business%20Statistics->Business%20Statistics%20Documents/$FILE/Business_05-06.xls?OpenElement)

UK: [www.insolvency.gov.uk/otherinformation/statistics/200604/index.html](http://www.insolvency.gov.uk/otherinformation/statistics/200604/index.html)

Canada: [http://strategis.ic.gc.ca/epic/internet/inbsf-osb.nsf/vwapj/Quarter1\\_2006\\_Bulletin\\_E.pdf/\\$FILE/Quarter1\\_2006\\_Bulletin\\_E.pdf](http://strategis.ic.gc.ca/epic/internet/inbsf-osb.nsf/vwapj/Quarter1_2006_Bulletin_E.pdf/$FILE/Quarter1_2006_Bulletin_E.pdf)

USA: [www.uscourts.gov/bnkrpctystats/bankruptcy\\_f2table\\_mar2006.xls](http://www.uscourts.gov/bnkrpctystats/bankruptcy_f2table_mar2006.xls)

The US, England and Wales and Canada's international bankruptcy figures are for the 12 months 1 April 2006 - 31 March 2007 as the year 1 July 2006 - 30 June 2007 data was not available for these countries at the time of publication.

It should be noted that differing insolvency regimes are operated in the various international