

2018/2019

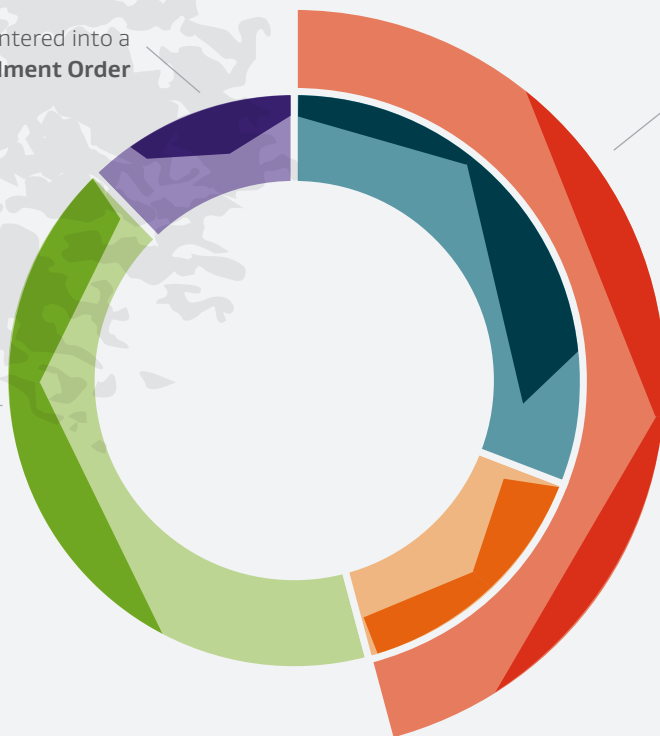
New Zealand as a Village of 100 Insolvent Debtors

Our population

In our village...

12 people have entered into a
Summary Instalment Order

42 people have
entered into a
No Asset Procedure

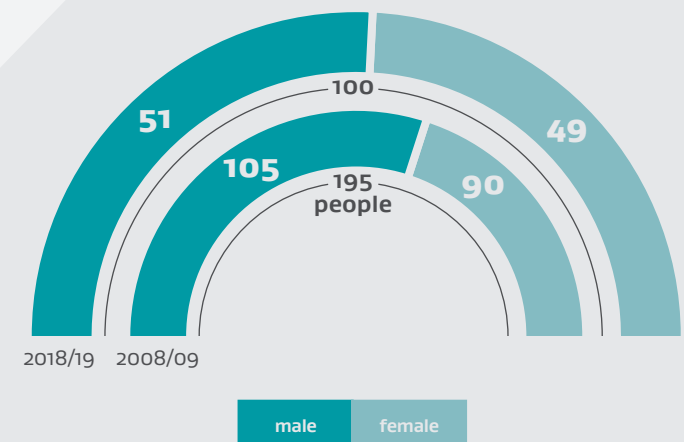


46 people are **bankrupt**

31 are **debtor applications**
15 are **creditor applications**

2,890 people entered into personal insolvency procedures in New Zealand during 2018/19. In our village of **100**, each person represents **29** people.

Gender 2018/19

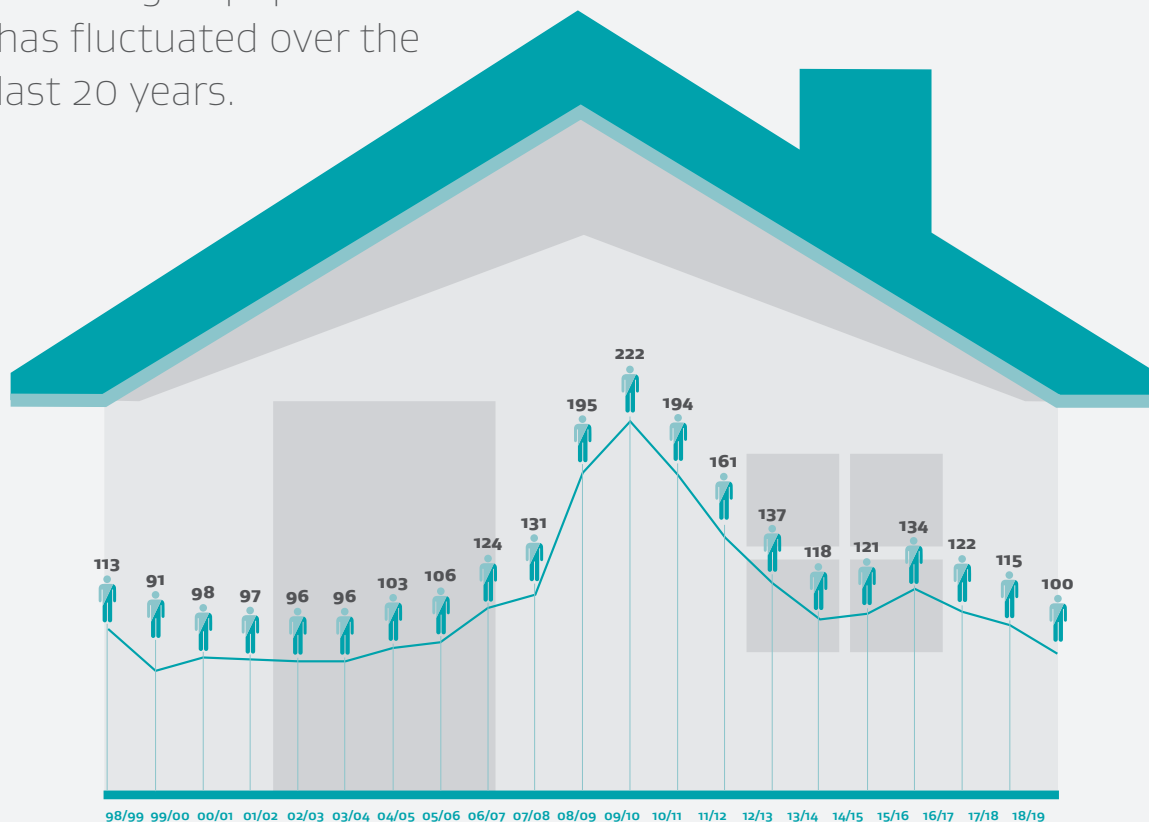


51 are male, **49** are female

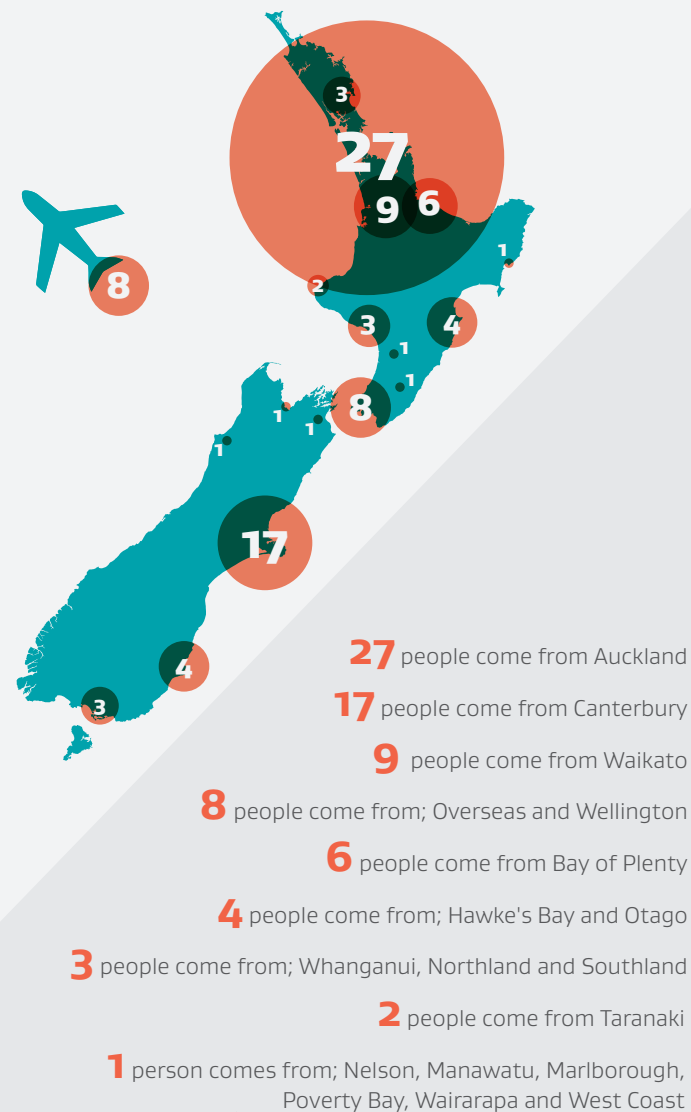
***7** of the bankrupt debtors in our village have been bankrupt or in a No Asset Procedure before

Population

Our village's population has fluctuated over the last 20 years.



The population of our village is **100** people. The last time our population was this low, was in 2003/04, **prior** to the Global Financial Crisis.



Region

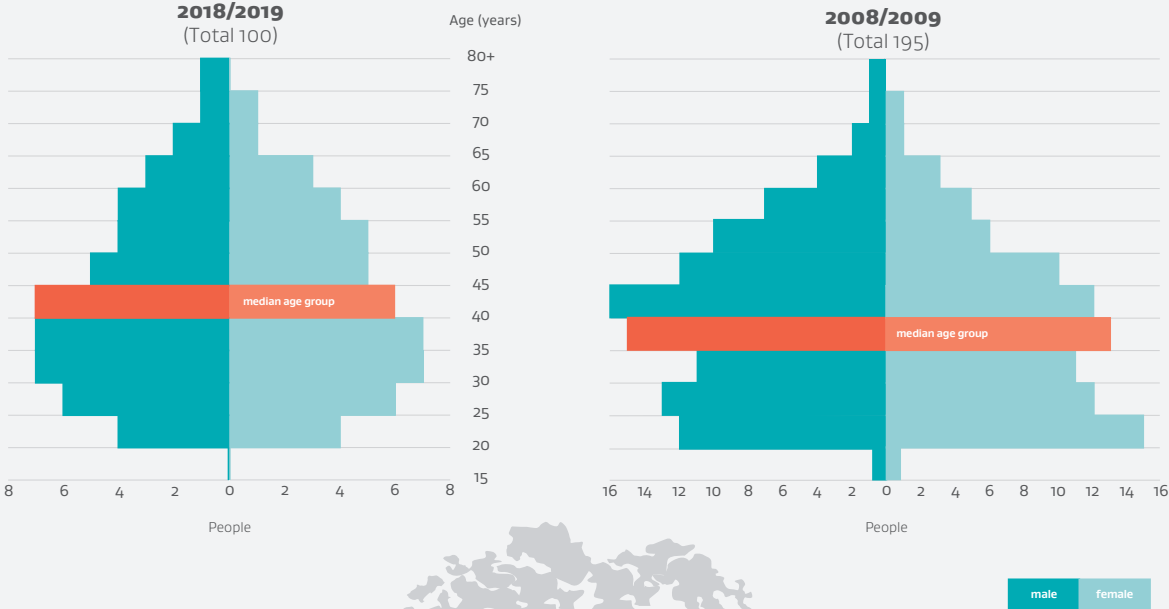
Cultural diversity



Of the 100 people in our village who stated one or more ethnicity...

- identify as **Maori**
- identity as **Pacific Peoples**
- identify as **'other European'**
- identify as **Asian**
- people identify as **Australian**
- people in our village selected **'other' ethnicity**

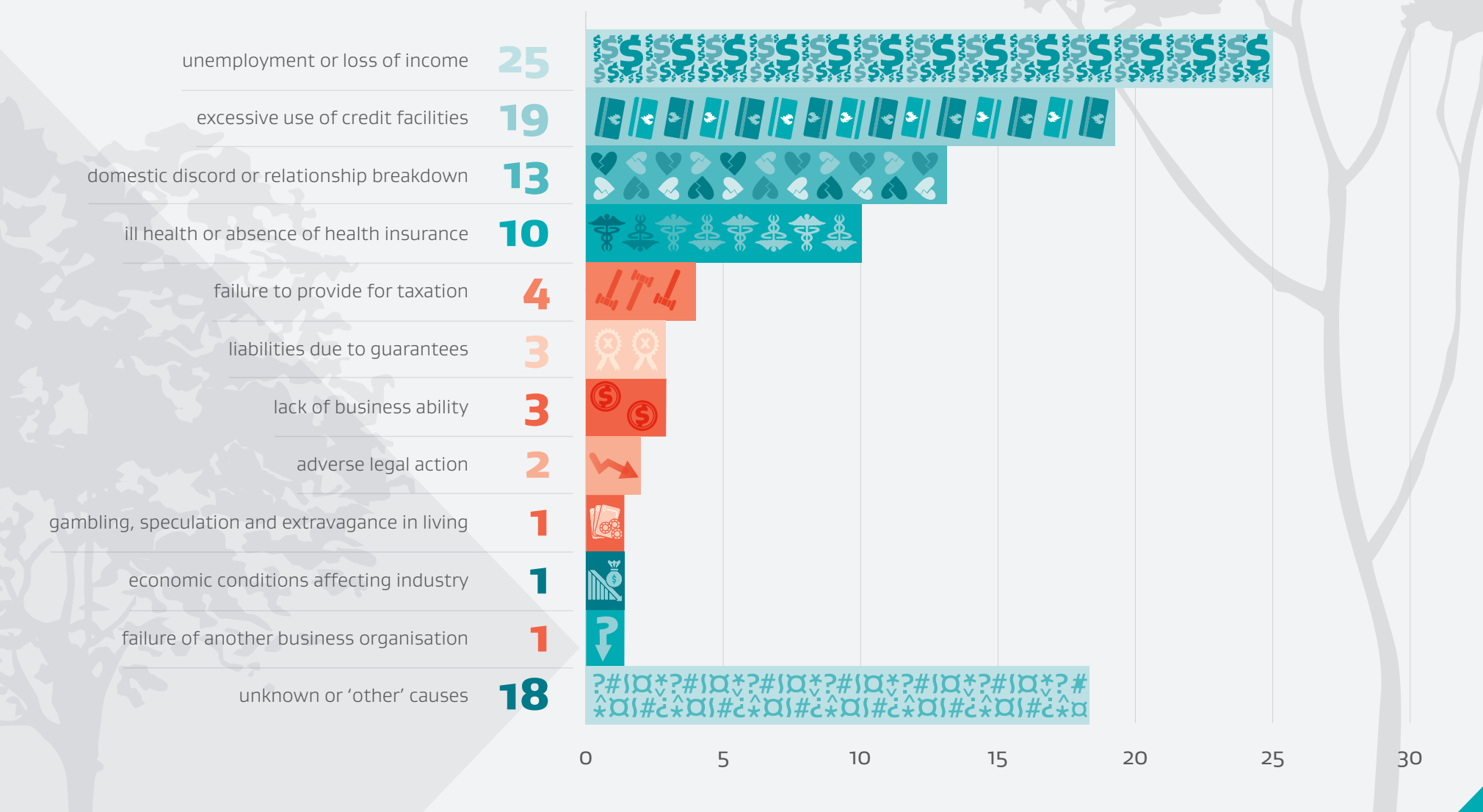
Age



Our village's ages and median age-groups

Cause of insolvency

Within our village, insolvency is attributed to the following causes ...

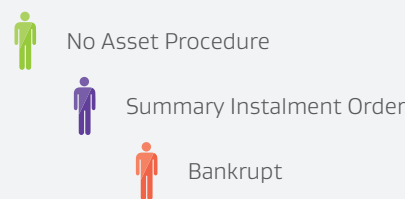


Employment

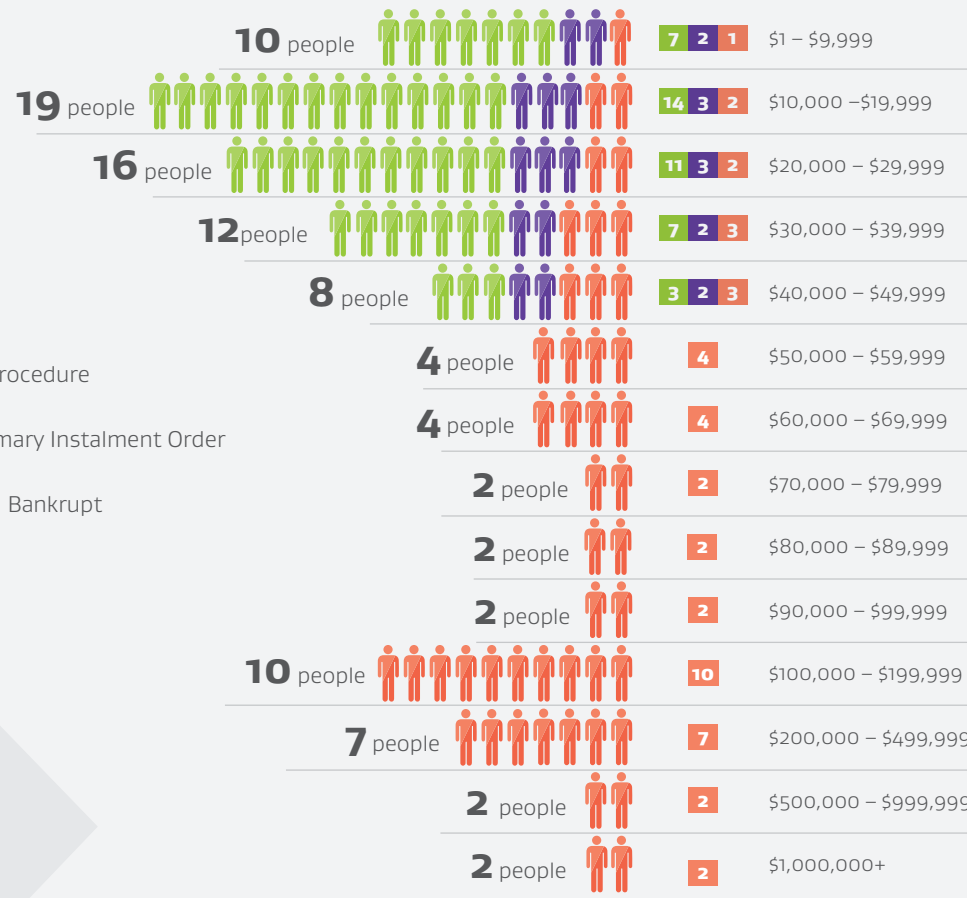
In our village everybody is aged 15 years or over ...



Our village's debt levels. . .



Debt level



Note: This infographic was developed to illustrate the key demographics of people who entered into personal insolvency procedures during 2018/19 using the concept of New Zealand as a village of 100 insolvent debtors. This data has been obtained through various sources, predominantly the Statement of Affairs form which debtors are required to complete upon entering into an insolvency procedure. Other sources of information include public registers and information provided by creditors and other third parties.

For further comparative data on previous financial years please refer to the Insolvency and Trustee Service website www.insolvency.govt.nz